



**Shelley Signs Ltd**  
54, Cartmel Drive  
Harlescott  
Shrewsbury  
Shropshire  
SY1 3TB  
Tel: 01743 460996  
Email: sales@shelleysigns.co.uk  
**www.shelleysigns.co.uk**

Sharon Smyth  
Attleborough Town Council

Attleborough  
Norfolk

**Quote ref: 23992 / RSS**

**Date: 12/10/2023**

Dear Sharon

Further to your recent enquiry, we are quoting as follows. Comprehensive details of our products and services can be found at [www.shelleysigns.co.uk](http://www.shelleysigns.co.uk)

- Title:** Welcome To Attleborough Signs
- Size:** This quote is for 4 identical Welcome To Attleborough Signs at an assumed size of 1500 x 800mm.
- Artwork:** Artwork to be prepared by ourselves from your roughs. It is understood that you will provide final text and electronic copies of all logos.
- Proof:** On receipt of an order, design proofs will be submitted in a PDF format.
- Printing:** Our Mimaki printer will enhance your design with excellent print quality, crisp text and bright, vibrant reproduction of photographs, water colours and images. This high quality print is supported by a 10 year warranty against fading. It offers eco-friendly printing with zero VOC emissions & little wastage.
- Materials:** Our Encapsulated Glass Reinforced Plastic (GRP) signs are designed for use in public open spaces. They offer exceptional outdoor durability & colour fastness. The finish allows graffiti to be easily cleaned while water ingress is not a problem.
- Finishing:** Signs supplied as 4mm thick flat panels complete with bolt channel and powder coated aluminium posts. Please refer to Item V-9 on the attached Framing Options page, which also gives examples of our most popular Framing Structures.

Quantity & Option	Price ( £ )
Design & 4 off Welcome signs with posts, total	£2,845.00

**Delivery:** To be agreed in the event of an order. All prices are subject to Packing & Carriage at an estimated £125.00 total to deliver all 4 items to one address.

**Terms:** All prices are subject to VAT. Please note: Prices are valid for one month only.  
Payment : Nett by 20th of month following date of invoice.

Yours sincerely

Rachel Shelley

## POPULAR FRAMING OPTIONS

This page illustrates our most popular styles of fixings - but please contact us to discuss non-standard items. Printed signs are available in either 'Prestige' encapsulated Glass Reinforced Plastic (GRP) or 'Standard' Dibond with a protective coating. For printed panels you can supply your own electronic artwork or use the in-house Shelley design team.

### LECTERN FRAMES



**L1.** Powder Coated Aluminium: the Standard option.



**L2.** Mild Steel, zinc etched and powder coated.



**L3.** Brushed Stainless Steel.



**L4.** Oak legs with Accoya frame.



**L5.** Softwood.



**L6.** Recycled Plastic.

Lectern frame legs are 1.6m long with the mid point of the sign being 1.0m above ground. For installing 600mm deep holes are required.

Our most popular frame structures are:

- Powder coated aluminium please request a colour chart. This is a stable and very durable metal option.
- Oak legs with Accoya frames. Accoya offers exceptional durability & stability. This combination is the most durable and stable timber option available.
- Recycled plastic legs and frames are growing in popularity.

### VERTICAL FRAMES



**V1.** Powder Coated Aluminium.



**V2.** Aluminium with a header panel.



**V3.** Brushed Stainless Steel.



**V4.** Timber with header panel.



**V5.** Side mounted posts.



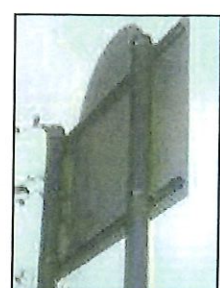
**V6.** Oak legs with Accoya frame.



**V7.** Softwood.



**V8.** With notice board.



**V9.** Channel and posts.

WALL MOUNTED



W1. Aluminium Frame.



W2. Drilled.

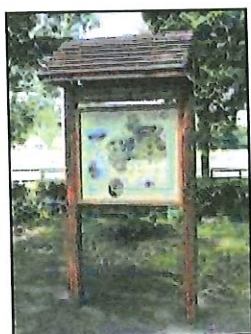


W3. Wooden Frame.



W4. Stainless Steel Frame.

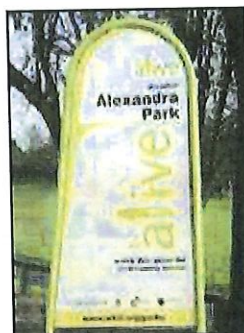
OTHER POPULAR FIXING STRUCTURES



F1. Pitched Roof Shelter.



F2. Shaped panel.



F3. Tubular hoop frame.



F4. Routed plank.



F5. Single wooden post.



F6. Heritage style.



F7. Sandblasted frame.



F8. Aluminium with finials.



F9. Shelter with a notice board.



F10. Side mounted posts and weather board.



F11. With routed header.



F12. Sign & notice board frame.

In addition to the popular fixing options illustrated, we design & produce structures and frames to meet individual requirements.

Please call us to discuss options or request a quote.

## MATERIALS

### PRINT & MATERIALS

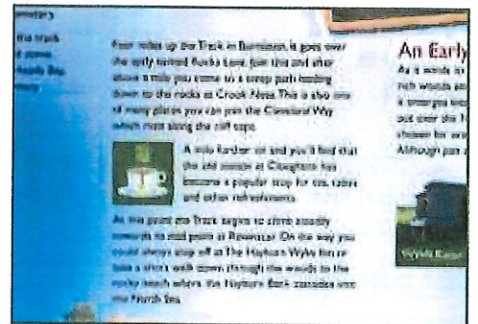
We undertake all printing in-house which gives us complete control over the process and print quality. Our state of the art Mimaki printer offers exceptional quality with clear text and bright vibrant colours. You will receive a paper proof for approval and can speak direct to our print & design team should anything need tweaking—you remain in control and will only sign off the proof when you are happy.



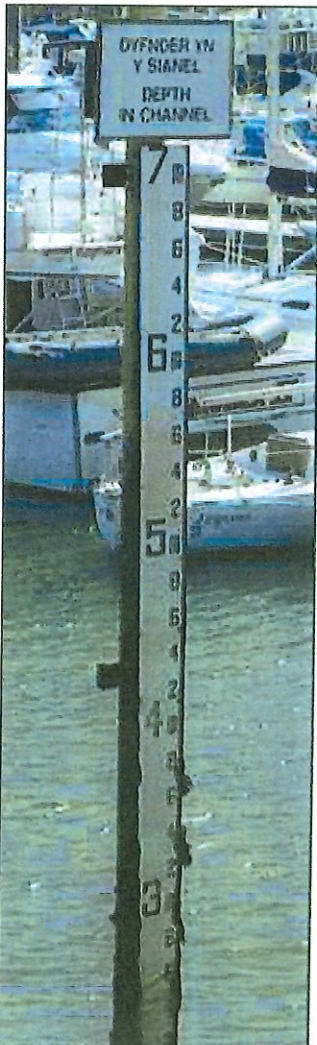
In-house printing



Vibrant colours



High quality text



Gauge boards after 9 years

### DURABILITY

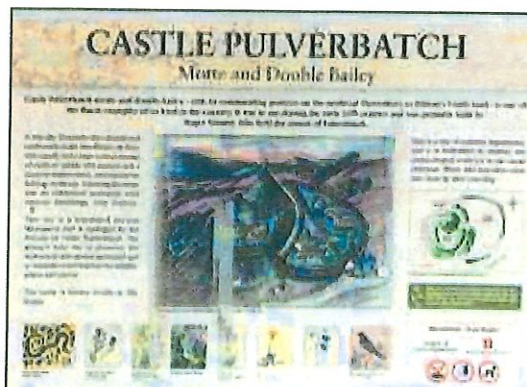
Shelley Signs specialise in producing robust and durable signs and graphics for public open spaces. Our print and finishing techniques have been developed to meet the weathering and anti vandal properties required in these environments as well as providing long term colour fastness.

Encapsulated Glass Reinforced Plastic (GRP) is our recommended material for durable signs. This page gives examples of products that have been on site for about 10 years, produced by Shelley using earlier printers but evidence of the durability we offer.

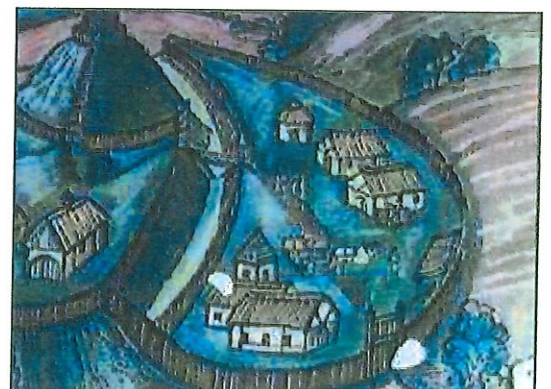
We produce water depth gauge boards using the same print and finishing techniques. This example has been in Pwllhelli Marina for 9 years. Continually exposed to tide and weathering this is the most demanding of applications and an excellent demonstration of how robust our GRP material is.

### COLOUR FASTNESS

On the GRP option a 10 year warranty is offered against fading. This Castle Pulverbach sign was on site, South facing, for 11 years—the sign was replaced with an updated design but colours had showed almost no change over that period.

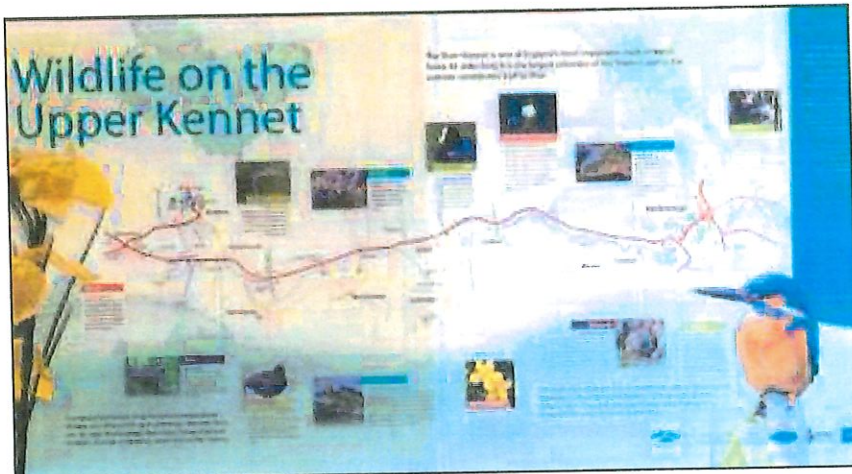


Interpretation panel after 10 years on site



## CLEANING

A regular clean will help prolong the life of your signs and set off the display to best advantage. This Upper Kennet sign was on site for 8 years—one half has been given a good clean by ourselves to show how well the GRP material will clean and how colourfast the inks are.



8 year old sign—one half cleaned

## GRAFFITI

Graffiti can be easily cleaned off the surface of encapsulated GRP signs and is one of the reasons why the material is ideal for interpretation panels. We supply 'Antivan' which is an aerosol based product and very effective at cleaning graffiti and spray paint.



Cleaning graffiti

## RECYCLING

At the end of their life please return old GRP signs to us. We can recycle by either a) Stripping them down, reprinting & re-encapsulating or b) By using as backers in new commissions.



Recycling GRP

## MATERIALS

Our Encapsulated Glass Reinforced Plastic (GRP) process is the recommended material for long term outdoor graphics—as explained on this page it offers excellent print quality, high durability & colour fastness. Lower specification materials including aluminium, Dibond, Polycarbonate and vinyl can also be quoted.



GRP sign in situ

## ENVIRONMENTAL

This is a complex area but we print direct to material with minimum material wastage, cure inks with cold LED lights, use no solvents and emit almost zero VOC's in the printing process. All materials are produced to the highest environmental standards.



Part of our workshop

### A Testimonial

The removal of the earlier panel (supplied by you in 2006) proved to be very straightforward. The metal lectern frame is still as good as new and the information board we have replaced today is still in excellent condition. The only reason we replaced it is that site ownership has changed. We were very pleased with the durability of your products and will be placing several more orders with you over the coming months now we have acquired new sites.

**Chiltern Society, (2016)**  
**Roger Newman**

Please request a sample of our robust Glass Reinforced Plastic material