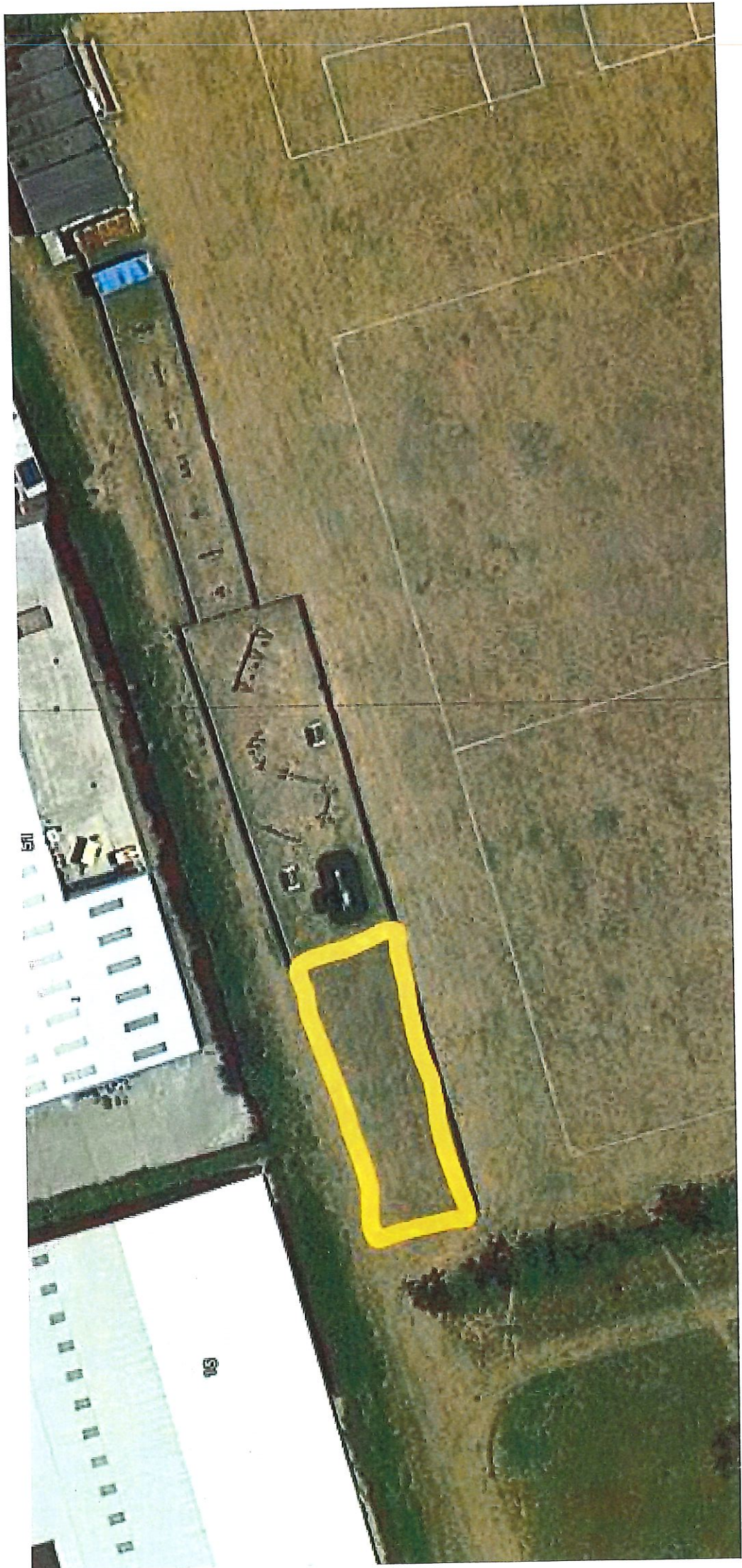


15)







Synthetic Surfacing Colour Range

Long Jump Synthetic Surfacing is a vertical loop sports surface which is extremely durable and caters for all sports and recreational level sports and can receive inlaid line marking which are ideal for take off jump markers.

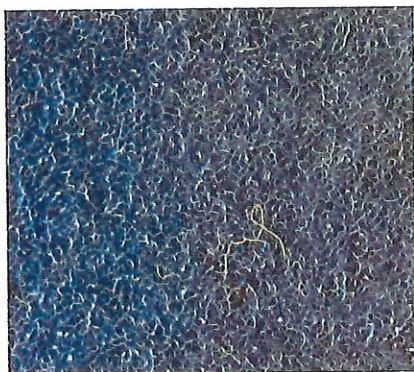
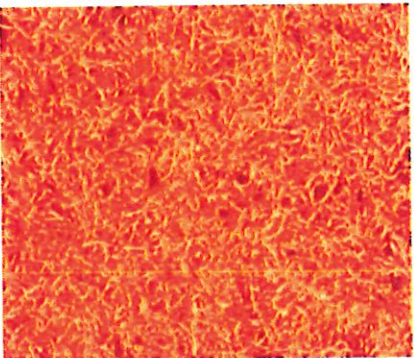
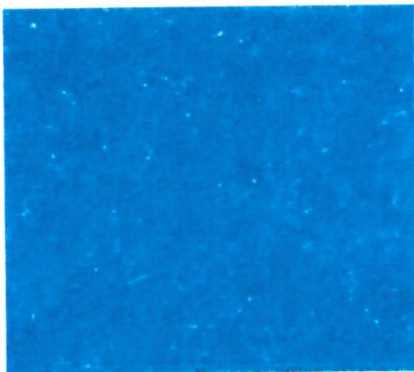
It is an excellent choice for new athletics facilities or upgrade projects and offers good value and versatility, as a wide variety of colours are available to cover most uses.

The synthetic athletics surfacing standard colour range available is:

- Sporting Green
- Terracotta
- Yellow
- Light Blue
- Red
- Navy Blue

The main advantages of the synthetic turf long jump runways are: They are the most hard wearing surface specification, are never slippery in wet conditions, top quality all weather flooring. Longevity and are available in a whole host of colours.

SYNTHETIC LONG JUMP RUNWAY COLOUR RANGE



Water House, 35 Water Lane, Wilmslow, Cheshire, SK9 5AR

Tel: 01625 445 760 Fax: 01625 525 619

info@softsurfaces.co.uk

www.softsurfaces.co.uk

MULTISPORT™ SYNTHETIC SURFACING SUB BASE

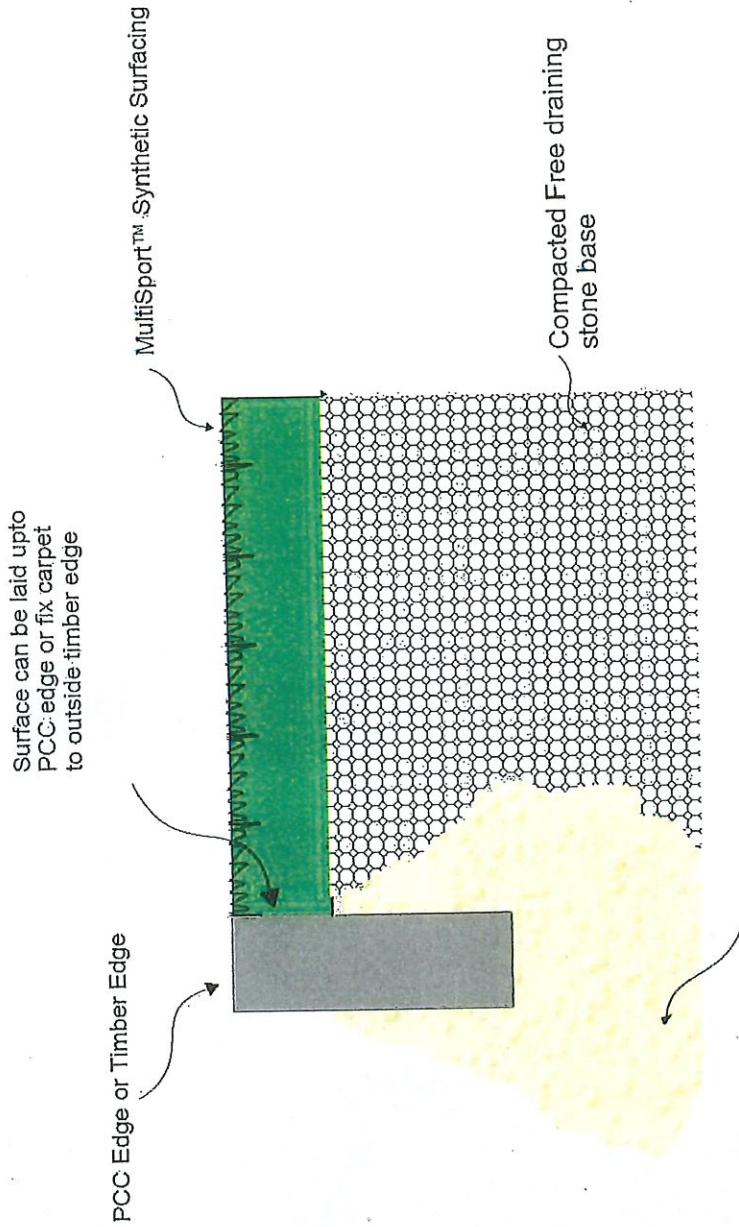
MultiSport™ Synthetic Surface Sub Base

The groundworks include getting rid of the top layer of SOD which is basically the surface consisting of grass roots, topsoil and debris.

Once the SOD is removed and excavated then a Geo-textile Membrane that's designed to specifically stop the growth of any weeds is installed.

On top of the geotextile membrane then porous free draining stone is imported and compacted to give a suitable sub base to install the MultiSport™ synthetic surfacing.

This sub base specification includes a timber edge to the perimeter of the groundworks which is where the MultiSport™ synthetic surfacing is fitted to the outside edge.



Concrete Haunching for PCC Edge or Pegged for Timber Edging



SPORTS AND SAFETY SURFACES

MultiSport™ Vertical Loop Surface

Our MultiSport™ Synthetic Surface is extremely durable and caters for all sports and recreational level sports / play use and can receive inlaid line marking if desired.

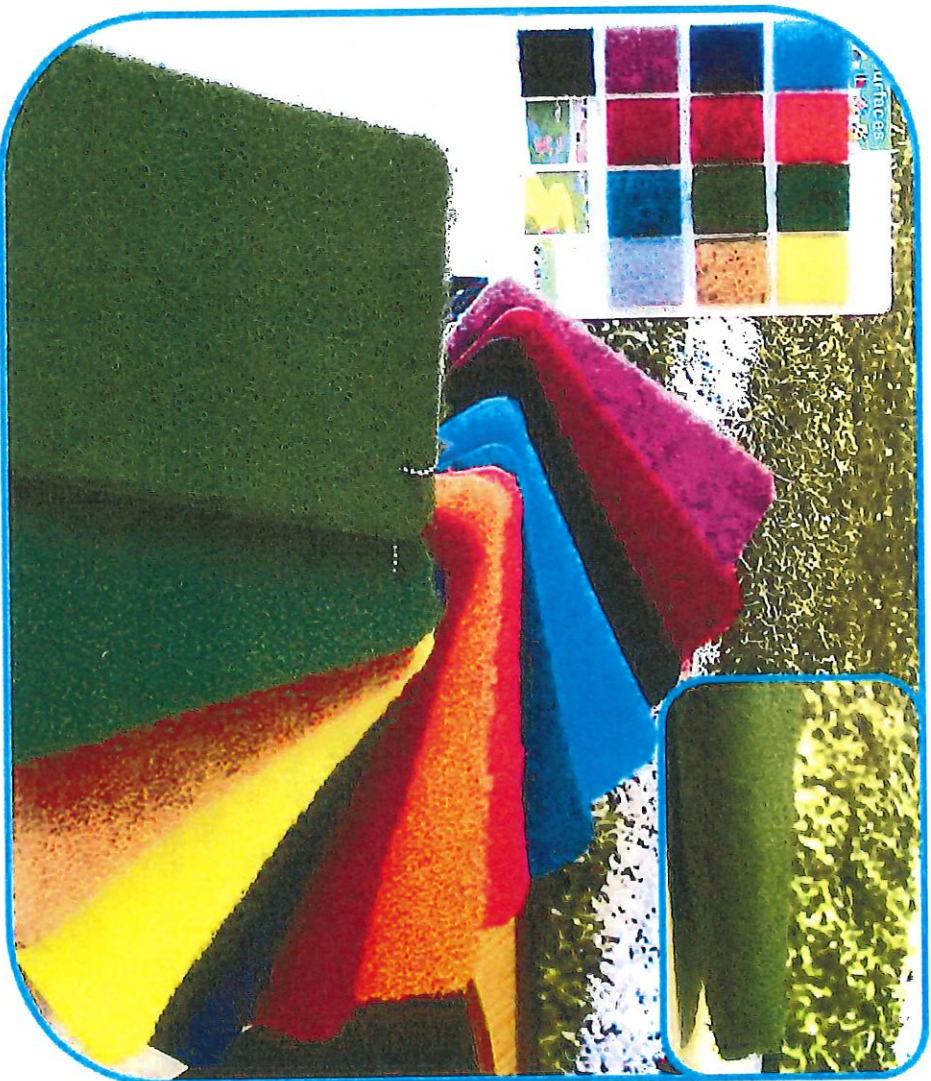
It is an excellent choice for new or refurbishment projects and offers good value and versatility, as a wide variety of colours are available to cover most uses.

The MultiSport™ synthetic surfacing is great for the following reasons :

- Multi Sports Surface
- Low sand content
- Low maintenance
- Hard Wearing / Durable
- Various Colours

As the MultiSport™ synthetic surfacing is the most durable all weather surface it is being specified in whole host of applications from athletics facilities like long jump runways, kickabout sports courts, MUGAs, all weather pitches or pathways / walkways on golf courses.

MULTISPORT™ SYNTHETIC SURFACING



Water House, 35 Water Lane, Wilmslow, Cheshire, SK9 5AR

Tel: 01625 445 760 Fax: 01625 525 619

info@softsurfaces.co.uk

www.softsurfaces.co.uk

SURFACINGS FOR ATHLETICS FACILITY

330A SAND SURFACING TO LONG JUMP LANDING PIT

- Sub-base: Geotextile Membrane
 - Manufacturer: Sports & Safety Surfaces, Tel: 01625 445760
- Surface Course: Clean washed silica sand of smooth rounded particles
 - Manufacturer: Soft Surfaces Ltd, 35 Water Lane, Wilmslow, SK9 5AR
 - Tel: 01625 445760, Fax: 01625 525619
 - Email: info@softsurfaces.co.uk Website: www.softsurfaces.co.uk
 - Product reference: Long Jump Landing Pit

340A SURFACING TO LONG JUMP AREA

- Sub-base: Porous Stone Sub Base
 - Thickness: Various Depths dependent on Sub Structure
 - Manufacturer: Sports & Safety Surfaces, Tel: 01625 445766
- Surface Course: MultiSport™ Synthetic Surfacing
 - Standard: To BS 15330-1
 - Manufacturer: Soft Surfaces Ltd, 35 Water Lane, Wilmslow, SK9 5AR
 - Tel: 01625 445760, Fax: 01625 525619
 - Email: sports@softsurfaces.co.uk Website: www.softsurfaces.co.uk
 - Product reference: MultiSport™ Synthetic Long Jump Runway Surfacing
 - Colour: From standard colour range
 - Health and Safety: CHAS accredited, API accredited, CONSTRUCTIONLINE accredited
Substance known to be toxic or carcinogenic on skin or released as vapour or dust during normal use: Not permitted.
- Submit:
 - Resistance to abrasive wear, slip resistance, resistance to indentation and ease of
ignition: Evidence of testing to BS 7188.
 - Critical Fall Height: Evidence of testing to BS EN 1177.

420 LINE MARKINGS

- Method of Application : Cut and inlaid into carpet
 - Setting Out: To accredited standards (IAAF)
 - Colour: Dependent of primary sport lines

COMPLETION

910 SPORTS SURFACE TESTING

- Standard: To BS EN 14877 and BS 15330-1, where applicable.
- Testing Body: Sports & Safety Surfaces accredited independent laboratory
- Timing: Within ten days of completing the surface works.
- Test Results: Submit.

930 DOCUMENTATION

- General: For all types of surfacing, provide the following:
 - Name and contact details of installer.
 - Date of installation.
 - Name and contact details of manufacturer.
 - Type/ description/ reference of products used.
 - Manufacturer's recommended inspection and maintenance procedures to maintain safety and impact absorbing performance.
 - Manufacturer's recommended cleaning and maintenance methods, where relevant.

Soft Surfaces



SPORTS AND SAFETY SURFACES

Water House, 35 Water Lane, Wilmslow, Cheshire, SK9 5AR

Tel: 01625 445 760 Fax: 01625 525 619

www.sportsandsafetysurfaces.co.uk

sports@softsurfaces.co.uk

CASE STUDY FOR MULTISPORT SYNTHETIC LONG JUMP CONSTRUCTION



CASE STUDY FOR MULTI LANE LONG JUMP

Project Name: Ormiston Bushfield Academy Long Jump Runway

Project Address: Ortongate, Peterborough

Size of Project: 120m² 4 lane long jump run up with multi lane training athletics area

Works Carried Out: The excavation of the existing grass area allowed room for the installation of a porous free draining stone sub base. The sand pit that had been dug out was then filled with a washed and dried silica play sand specification, and then the MultiSport™ synthetic turf was installed onto the running track to complete the final product. Attached is a video case study of this project installation - [Long Jump Runway In Peterborough](#)

"We were extremely happy with the overall final product and the work carried out by Soft Surfaces, and the facility now looks fantastic"

CONSTRUCTION AND GROUNDWORK

The first stage involved completion of the groundworks. This included marking out the dimensions given within the specification and then the excavation on site, as the job was a multi-lane long jump facility this required the excavation of 12 lanes. The excavation process was needed to allow the installation of a sub base which is made of free draining porous stone and then the installation of the synthetic carpet on top.



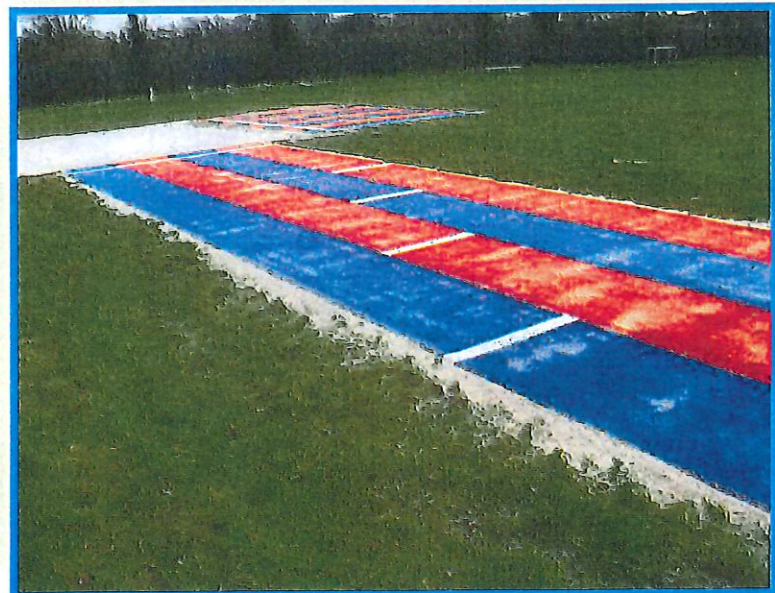
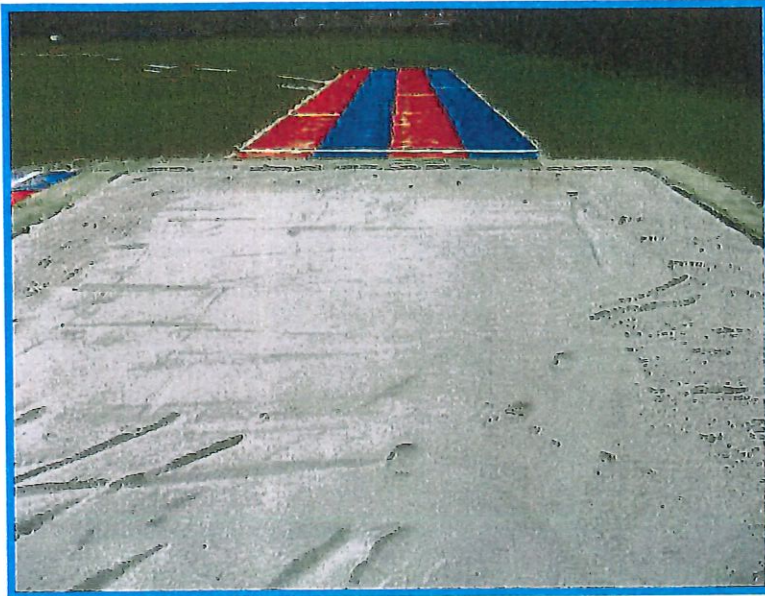
CONSTRUCTION AND GROUNDWORK

The first stage involved completion of the groundworks. This included marking out the dimensions given within the specification and then the excavation on site, as the job was a multi-lane long jump facility this required the excavation of 12 lanes. The excavation process was needed to allow the installation of a sub base which is made of free draining porous stone and then the installation of the synthetic carpet on top.



COMPLETED SYNTHETIC LONG JUMP TRACK

The final product is a synthetic multisport long jump track that has a long lasting product life. The long jump athletics run up surface is comfortable underfoot and is also completely porous, allowing for all weather usage of the product. The different colours give it an aesthetically pleasing and professional look.



INSTALLATION OF SYNTHETIC CARPET

Now the initial sub base has been set down and the timber edges have been installed to support the running track, the synthetic turf carpet can be installed on top of it. The clients wanted a red and blue striped effect. The material used is hard wearing, ensuring a long product life. A synthetic surface is harder wearing, available in a wide range of colours, is less prone to vandalism and does not shrink from the edges. These points make the surface a fantastic choice for schools, colleges, universities and leisure centres.



Soft Surfaces



SPORTS AND SAFETY SURFACES

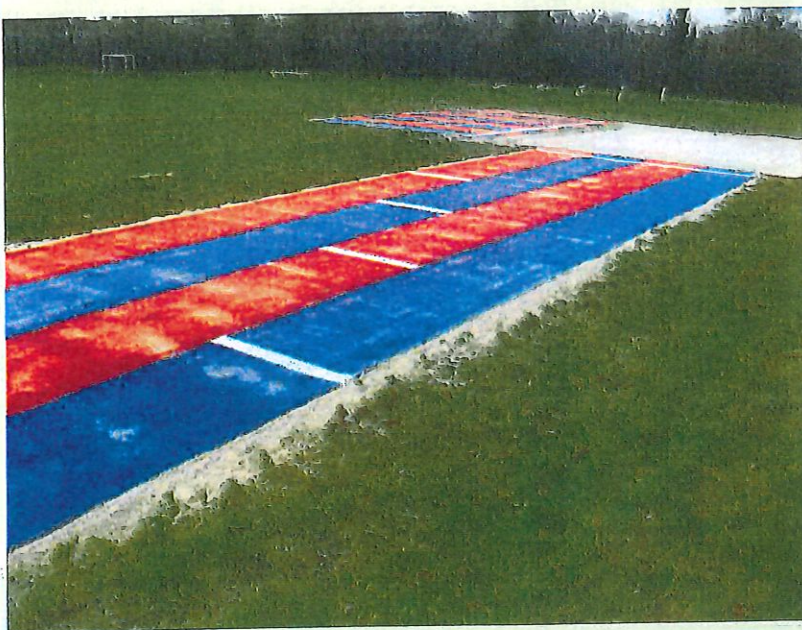
Tel: 01625 445 760 Fax: 01625 525 619

www.sportsandsafetysurfaces Water House, 35 Water

Lane, Wilmslow, Cheshire, SK9 5AR

sports@softsurfaces.co.uk

- ❖ 3rd Generation Artificial Grass
- ❖ Groundworks inc Drainage
- ❖ Sports Pitch Construction
- ❖ Long Jump Runways
- ❖ Polymeric Surfaces
- ❖ Sports Equipment
- ❖ Athletics Track
- ❖ Synthetic Turf
- ❖ Floodlights
- ❖ Shockpads
- ❖ Macadam
- ❖ Fencing
- ❖ MUGA



Soft Surfaces



SPORTS AND SAFETY SURFACES

Soft Surfaces



SPORTS AND SAFETY SURFACES

Water House, 35 Water Lane, Wilmslow, Cheshire, SK9 5AR

Tel: 01625 445 760 Fax: 01625 525 619

www.sportsandsafetysurfaces.co.uk

sports@softsurfaces.co.uk

CASE STUDY FOR SYNTHETIC TURF LONG JUMP RUNWAY



SYNTHETIC TURF LONG JUMP RUNWAY

Project Name: Wiltshire Artificial Grass Long Jump Run Up

Project Address: Bradford On Avon, Wiltshire

Size of Project: 4 Lane Long Jump Run Up, 25m x 4m Runway

Works Carried Out: Supply and installation of new artificial turf surfacing to the old existing athletics facility. The design and specification was to upgrade the facility into an all weather surface and the two specifications explored was a needlepunch synthetic grass or a rubber polymeric surface. The preferred material by the client was to go with the needle punch surfacing because it has hard wearing, multi coloured and a more cost effective construction. Here is a video case study of the project - [Artificial Turf Long Jump Run Up](#)

The athletics facility has been transformed from an old tired long jump run up to a brand new vibrant multi coloured athletics track area. I would recommend this material and installation to any refurbishment project.

EXISTING OLD DOUBLE LONG JUMP RUN UP

The old existing long jump run up facility was extremely worn, weather damaged and unsafe meaning that children at the school were unable to use the long jump runway and sand pit. This meant that during the summer months when children wished to practice and compete in school sports days, the long jump could not be utilised.



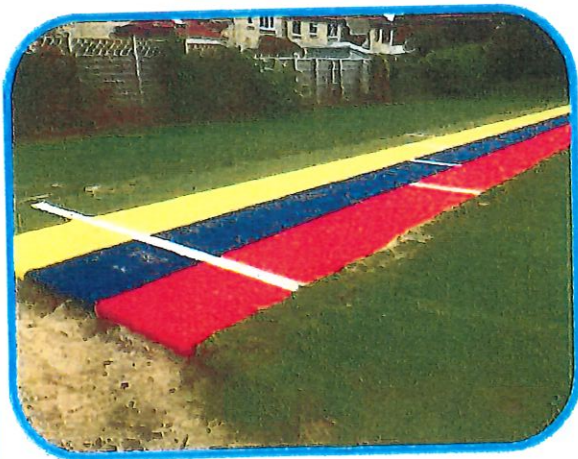
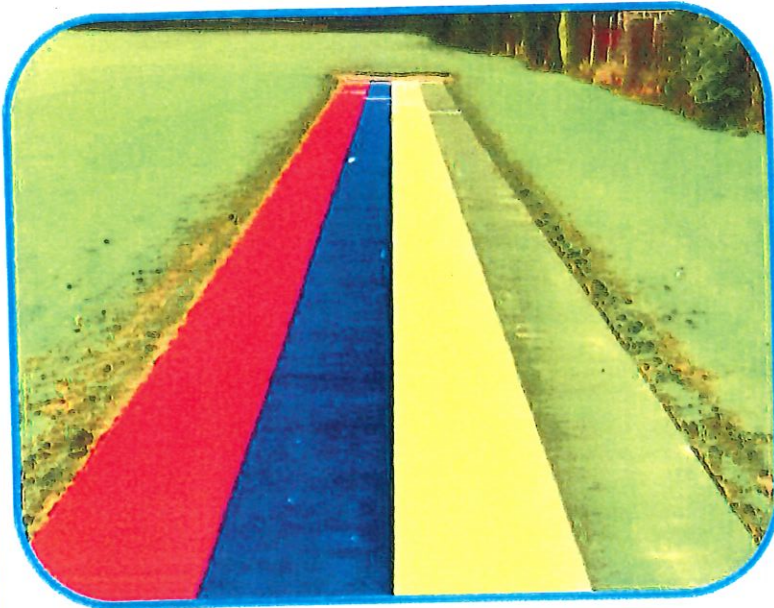
CONSTRUCTION OF LONG JUMP RUNWAYS

The new construction began with the excavation of existing area including the damaged runways which were unfit for use. The area was levelled, fitted with timber edges followed by a compacted layer of MOT type 1 stone which is fully porous allowing the free drainage of any surface water. This ensured that the new system is SUDs compliant year round and especially in adverse weather.



COMPLETED 4 LANE LONG JUMP RUNWAY

The new needlepunch athletic surfacing in various colours is aesthetically pleasing and a perfect surface for long jump runways. The different colours and distance take off boards represent a different age group/ability giving the children at the school something to aim for.



Soft Surfaces



SPORTS AND SAFETY SURFACES

Water House, 35 Water Lane, Wilmslow, Cheshire, SK9 5AR

Tel: 01625 445 760 Fax: 01625 525 619

www.sportsandsafetysurfaces.co.uk

sports@softsurfaces.co.uk

- ❖ 3rd Generation Artificial Grass
- ❖ Groundworks inc Drainage
- ❖ Sports Pitch Construction
- ❖ Maintenance & Repairs
- ❖ Polymeric Surfaces
- ❖ Sports Equipment
- ❖ Athletics Track
- ❖ Synthetic Turf
- ❖ Floodlights
- ❖ Shockpads
- ❖ Macadam
- ❖ Fencing
- ❖ MUGA



Soft Surfaces



SPORTS AND SAFETY SURFACES

Soft Surfaces



SPORTS AND SAFETY SURFACES

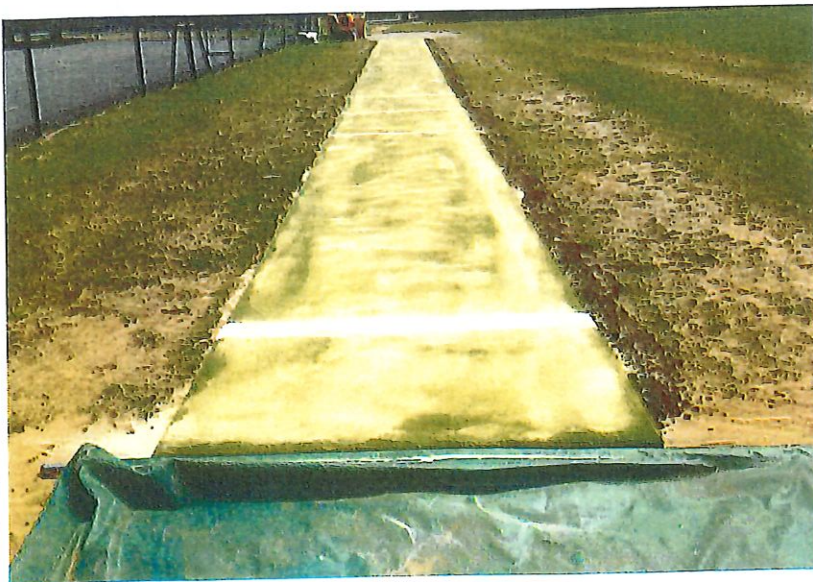
Water House, 35 Water Lane, Wilmslow, Cheshire, SK9 5AR

Tel: 01625 445 760 Fax: 01625 525 619

www.sportsandsafetysurfaces.co.uk

sports@softsurfaces.co.uk

CASE STUDY FOR BURNHAM SYNTHETIC LONG JUMP RUNWAY



CASE STUDY FOR BURNHAM LONG JUMP

Project Name: Burnham Grammar Synthetic Turf Long Jump Runway

Project Address: Burnham Grammar, Buckingham, SL1 7HG

Size of Project: 60m², 30m length x 2m width

Works Carried Out: An existing long jump runway was looking aged and in need of a renovation and the customer had an idea by opting for a synthetic turf green artificial long jump runway as an alternative to a polymeric surfaced long jump run up to fit their budget. They decided on the synthetic turf surfacing option because the price was slightly cheaper but also because the artificial surface infilled with sand was harder wearing. Here is a link to the video version case study - [Synthetic Turf Long Jump Renovation Video](#)

Really happy with the Long jump runway, the standard of installation and materials used should make it a popular activity for many years to come, already we have had lots of students using it and commenting on how much better the long jump area looks!

I would also like to thank you for the professional advice over the phone and for getting it installed at such short notice, ready for our sports day on July 17th

Mike Durose, Head Of Sports

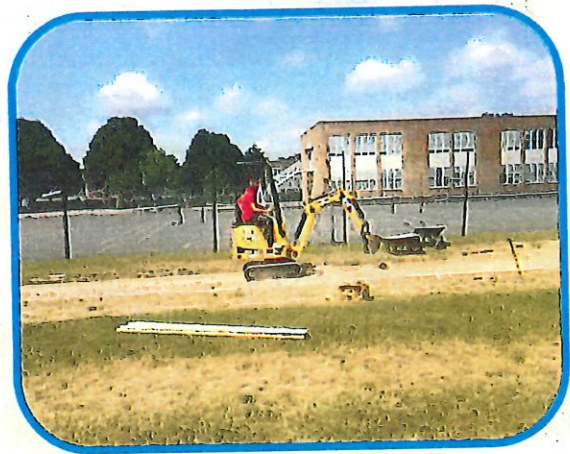
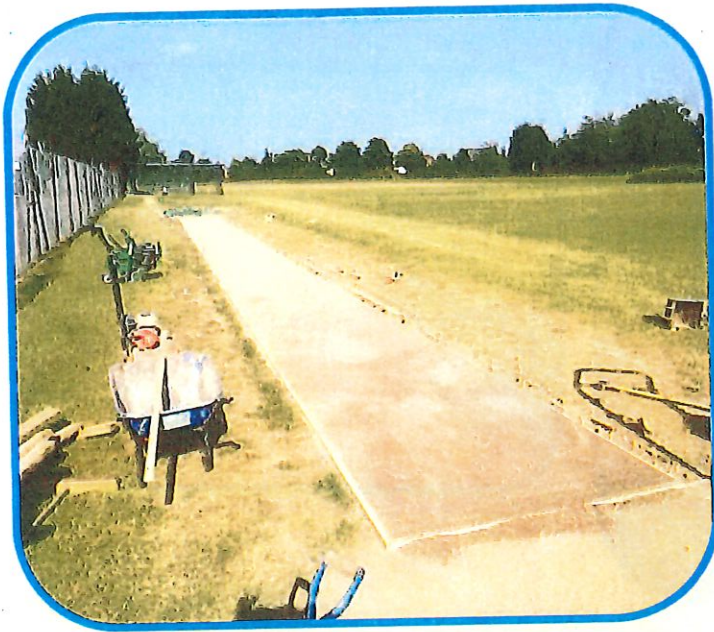
EXISTING LONG JUMP RUNWAY AREA

The existing athletics facility was unsightly and unsafe for use. A fast, effective and aesthetically pleasing long jump runways rejuvenation was required to ensure the long jump could be used for the school sports day and PE lessons for many years to come. With a professional looking long jump being required in a very short space of time it was important to use the correct materials to conduct a thorough and aesthetically pleasing surface.



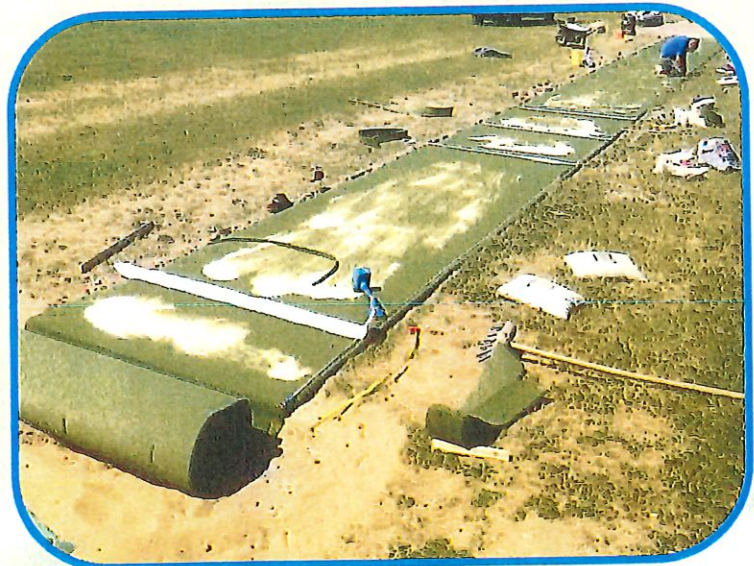
GROUNDWORKS FOR NEW LONG JUMP AREA

Before the synthetic grass surfacing could be laid, the long jump runway construction had to be prepared with new timber edges and a compacted layer of Type MOT stone to ensure a compacted porous sub base which is both level and sturdy under foot. A heavily compacted dynamic sub base will extend the life span of the synthetic artificial long jump run up and ensure that it remains in good working order throughout adverse weather conditions.



SYNTHETIC TURF RUNWAY INSTALLATION

Once the MOT stone sub base and timber edges has been installed to the long jump runway it was possible to lay the artificial sports carpet creating a safe, suitable surface for children to run on. The installation of the synthetic sports surfacing included the inlaid take-off lines to mimic a professional long jump take off board.



Soft Surfaces



SPORTS AND SAFETY SURFACES

Water House, 35 Water Lane, Wilmslow, Cheshire, SK9 5AR

Tel: 01625 445 760 Fax: 01625 525 619

www.sportsandsafetysurfaces.co.uk

sports@softsurfaces.co.uk

- ❖ 3rd Generation Artificial Grass
- ❖ Groundworks inc Drainage
- ❖ Sports Pitch Construction
- ❖ Maintenance & Repairs
- ❖ Polymeric Surfaces
- ❖ Sports Equipment
- ❖ Athletics Track
- ❖ Synthetic Turf
- ❖ Floodlights
- ❖ Shockpads
- ❖ Macadam
- ❖ Fencing
- ❖ MUGA



COMPLETED LONG JUMP RUN UP FACILITY

The sand filled artificial surfaces is now a new hard wearing all weather flooring which can be used all year round to practice long and triple jump activities in preparation for the final school sports day. The synthetic surfacing is a fast, cost effective way of producing a professional looking long jump and is available in a wide range of different colours including a red tartan style running track surface.



SYNTHETIC MOWING STRIP

Long Jump Runway Sand Pit construction can vary dependent of level of use and ground conditions.

The design, planning and construction of a long jump run up for athletics depends on restricted space and most important budget.

We always suggest around the perimeter of the long jump sand pit to have a mowing strip surface installed in .MultiSport™ Synthetic Surfacing.

This is simply to prevent any weed growth and when cutting any surfacing of grass to not allow any of the off cuts to get into the long jump run up landing sand pit.

It also gives the teachers an all weather surface to stand on to make the athletes length of jump as opposed to standing on muddy natural grass.

MULTISPORT™ SYNTHETIC SAND PIT MOWING STRIP



Water House, 35 Water Lane, Wilmslow, Cheshire, SK9 5AR

Tel: 01625 445 760 Fax: 01625 525 619

sports@softsurfaces.co.uk

www.sportsandsafetysurfaces.co.uk



LONG JUMP LANDING PIT RAKE

Long Jump Sand Pit Rake

Long Jump Runway landing pits require maintenance and regular raking of the sand to make sure it is spread evenly.

Regulating the sand evenly is very important and failure to do so can cause the substrata to show. Athletes need to be landing on the sand which is designed to absorb the fall and impact.

If you require a sand pit rake, we generally have the specialist rakes in stock for a price of:

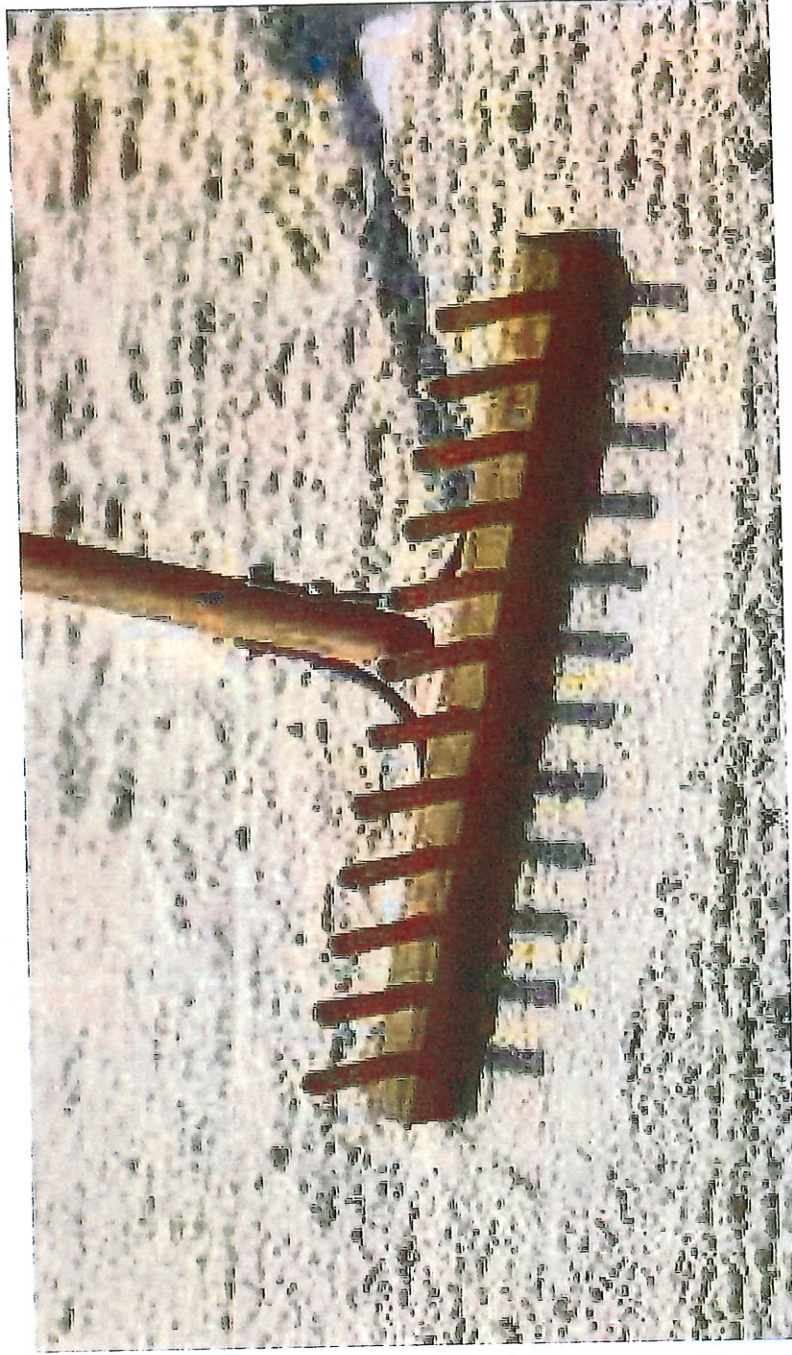
Standard Sand Pit Rake

£79.95 + carriage (+ vat).

Premium Leaves Collecting Rake

£199.50 + carriage (+ vat).

If you ever require a sand top up then this can also be included however the best solution would be to purchase the silica washed and dried sand from a local quarry.



Water House, 35 Water Lane, Wilmslow, Cheshire, SK9 5AR

Tel: 01625 445 760 Fax: 01625 525 619

info@softsurfaces.co.uk

www.softandsafetysurfaces.co.uk

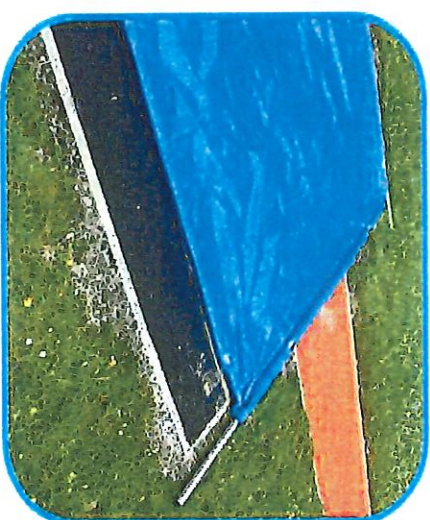
Long Jump Run Up Sand Pit Cover

Long Jump Run Up Covers vary depending on the schools budget. The sand pit covers varies in material and in cost. We generally stick to the vinyl sheet material with landing pit bars to weigh the long jump runway cover down.

We would suggest around the perimeter of the long jump sand pit / triple jump sand pit to have a mowing strip surface to prevent any weed growth and when cutting any surfacing of grass to not allow any of the off cuts to get into the long jump run up landing sand pit. Plus this mowing strip gives the sand pit cover bars a solid surface to be laid onto.

The sand pit covers are shown in the drawing but should you require a different spec long jump run up cover then we can amend upon request.

LONG JUMP RUN UP SAND PIT COVER



Water House, 35 Water Lane, Wilmslow, Cheshire, SK9 5AR

Tel: 01625 445 760 Fax: 01625 525 519

sports@softsurfaces.co.uk

www.sportsandsafetysurfaces.co.uk

Rubber Kerb Edges

Our Soft Kerb edges are available as an option where a safety edge is either required or desirable to minimise possible injury to users.

Specification

- Made from recycled truck tyres
- Black
- 1200mm x 50mm x 155mm

These are installed in the same way as the traditional Pre-Cast Concrete (PCC) edging. The rubber kerb edges have many uses.

Ideal for

- Long Jump Landing Pit Edging and Surrounds
- Play Areas, especially those which have wet-pour safer surfacing

RUBBER KERB EDGING - SAFETY EDGING



Water House, 35 Water Lane, Wilmslow, Cheshire, SK9 5AR

Tel: 01625 445 760 Fax: 01625 525 619

sports@softsurfaces.co.uk

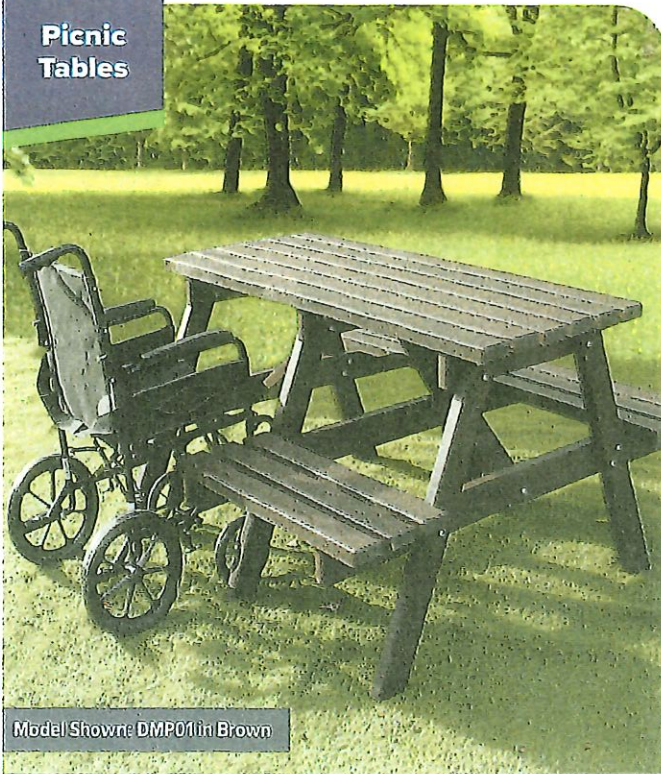
www.sportsandsafetysurfaces.co.uk

MULTI COLOURED ES35
ALL ORDERS.

16)

NBB

Picnic
Tables



Model Shown: DMP01 in Brown

Wheelchair Access Picnic Table

Great quality picnic table customised to provide space for wheelchairs

Features & Specifications

- A-frame picnic table adapted to allow space for wheelchairs
- Made from 100% recycled plastic with a wood grain effect
- Seat height: 440mm
- Table height: 780mm
- Medium table weighs 68kg and large table weighs 80kg
- Supplied with a parasol hole as standard (see page 35 for Parasols)

Benefits



Prices (See p10 for optional fixing kits)

Code	Colour	Size	L x D (mm)	Weight (kg)	Price
DMP01	BLK,BRN	Medium	1500 x 1460	68	£450
DMP02	BLU,GRN,GRY,CBY	Medium	1500 x 1460	68	£505
DMP03	MULTI	Medium	1500 x 1460	68	£535
DMP04	BLK,BRN	Large	2000 x 1460	80	£545
DMP05	BLU,GRN,GRY,CBY	Large	2000 x 1460	80	£610
DMP06	MULTI	Large	2000 x 1460	80	£670

Available Colours

(Undercarriage supplied in black for coloured options)



Wheelchair Access Octagonal Picnic Table

Popular table adapted for wheelchair users

Features & Specifications

- Spacious octagonal picnic table can comfortably accommodate most wheelchair specifications
- Made from 100% recycled plastic with a wood grain effect
- Seat height: 440mm
- Table height: 780mm
- Weight: 88kg
- Supplied with a parasol hole and built-in base as standard (see page 35 for Parasols)

Benefits



Available Colours

(Undercarriage supplied in black for coloured options)



Model Shown: DOP02 in Grey

Prices (See p10 for optional fixing kits)

Code	Colour	L x D (mm)	Weight (kg)	Price
DOP01	BLK,BRN	2000 x 2000 x 780	88	£775
DOP02	GRY,GRN,BLU,CBY	2000 x 2000 x 780	88	£785
DOP03	MULTI	2000 x 2000 x 780	88	£785

MULTI COLOURED £455 3-9
 £475 1-2

NBB

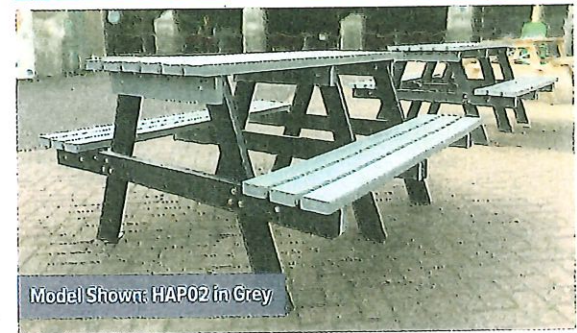
Picnic
 Tables



Model Shown: HAP01 in Brown



Model Shown: HAL01 in Brown



Model Shown: HAP02 in Grey

Standard Picnic Table

Best-selling picnic table available in medium or large sizes

Features & Specifications

- Perfect for outdoor eating and social areas
- Manufactured from 100% recycled plastic
- Guaranteed maintenance-free for 25 years
- Seat height: 440mm
- Table height: 780mm
- Medium table weighs 75kg and large table weighs 90kg
- Supplied with a parasol hole as standard (see page 35 for Parasols)
- NEW recycled plastic outdoor furniture cushions now available (see page 35)

Prices (see p10 for optional fixing kits)

Code	Colour	Size	Seats	L x D (mm)	Price Each	
					1	2+
HAL01	BLK, BRN	Large	6	2000 x 1460	£570	£530
HAL02	BLU, CBY, GRN, GRY	Large	6	2000 x 1460	£655	£620
HAL02	BEI, ORG, PUR	Large	6	2000 x 1460	£690	£650
HAL03	MULTI	Large	6	2000 x 1460	£690	£650

Best-Selling Bulk Saving!

Buy 3 Black or Brown Picnic Tables For Just **£1,200**

Prices (see p10 for optional fixing kits)

Code	Colour	Size	Seats	L x D x H (mm)	Price Each			
					1-2	3-9	10-24	25+
HAP01	BLK, BRN	Medium	4	1500 x 1460 x 780	£425	£400	£370	£340
HAP02	BLU, CBY, GRN, GRY	Medium	4	1500 x 1460 x 780	£460	£435	£415	£390
HAP02	BEI, ORG, PUR	Medium	4	1500 x 1460 x 780	£475	£455	£425	£405
HAP03	MULTI	Medium	4	1500 x 1460 x 780	£475	£455	£425	£405

Benefits

MADE FROM
2100 Milk bottles

25 YEAR GUARANTEE
Maintenance free

Free delivery

Easy to clean

Available Colours

(Undercarriage supplied in black for coloured options)

