

POS	AREA (m ²)	Proportion of Contracted Sum Covered on completion of transfer	Resident Grouping Number	Resident Management Plan
1	3205	£9,000	JBA 08/72-16	Management Plan 01
2	1458	£4,500	JBA 08/72-16	Management Plan 01
3	218	£550	JBA 08/72-18	Management Plan 01
4	3139	£9,000	JBA 08/72-21	Management Plan 01
5	3139	£46,850	JBA 08/72-20 / JBA 08/72-21 JBA 08/72-22 / JBA 08/72-23 JBA 08/72-17	Management Plan 01 Allotment Management

Taylor Wimpey

Transfer of Public O Areas to Attleborough

London Road, Att

Scale: 1:100

Drawn by: JGL

Date: 408/1

Taylor Wimpey

Transfer of Public O Areas to Attleborough

Scale: 1:100

Drawn by: JGL

Date: 408/1

ALLOTMENT RECOMMENDATIONS:

1. Based on the "Growing In The Community" (2nd Edition) 2006 guidelines produced by the Local Government Association the Town Council adopt its own allotments strategy including:

- an opening statement of commitment to allotment gardening;
- a vision of what the service aspires to achieve, including standards and targets for provision, and an acknowledgement of wider agendas;
- clear plans for achieving the vision, with a particular emphasis on promotion and resourcing, as well as the means to address the problems that may arise during implementation;
- a specified role for devolved management;
- a strategy for enhancing the quality of day-to-day administration of the allotments;
- a timetable for achieving the strategy and procedures for monitoring and reviewing progress;
- a concise summary of the contents, which can be used to promote the strategy to other stakeholders.

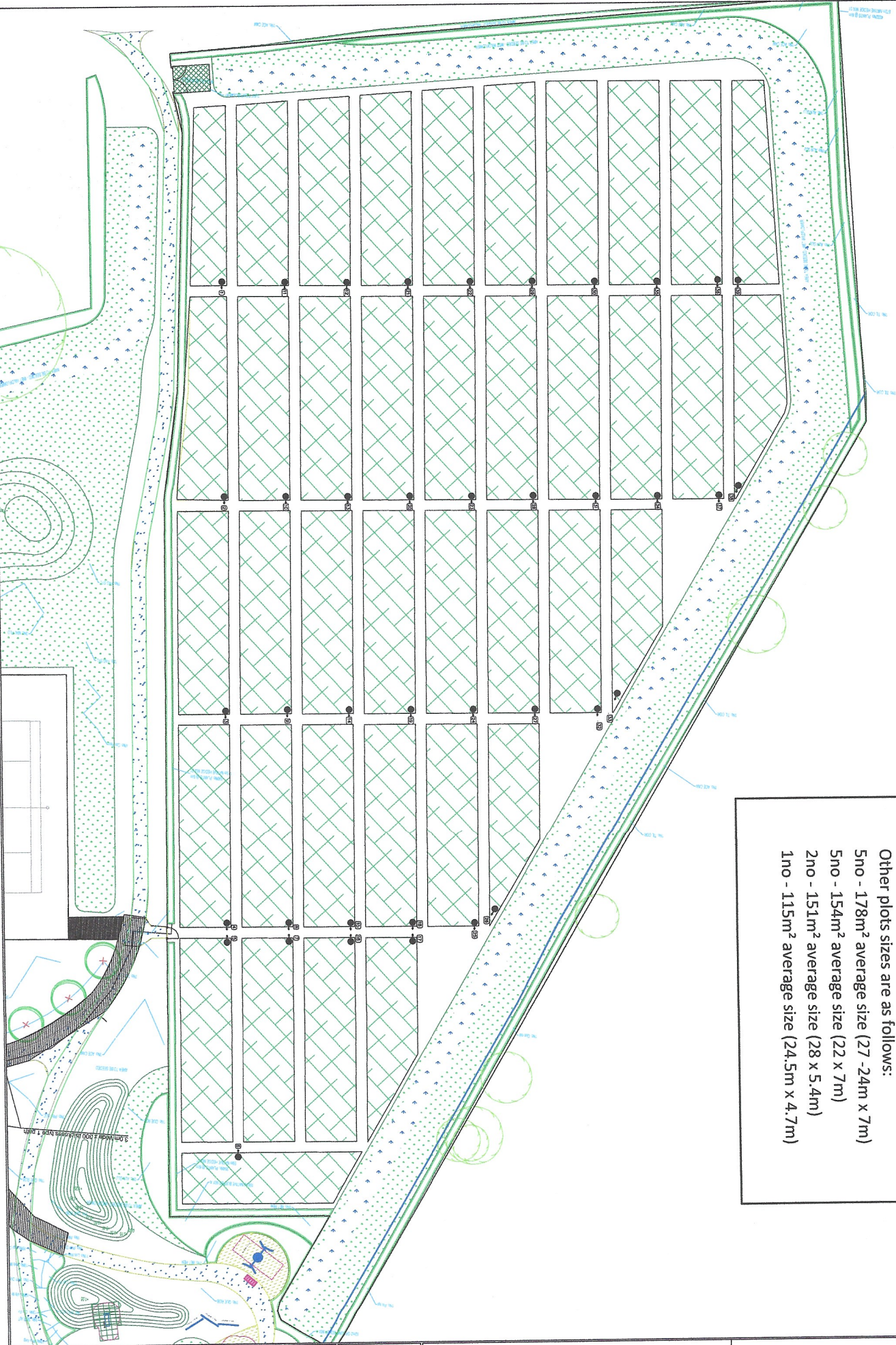
2. The Town Council reviews its allotment rules and tenancy agreements to reflect the allotments strategy.
3. The Town Council agrees in principle to grant temporary use of allotment land to a community group (the Attleborough Bloomers) with the agreement lasting for a period not exceeding 7 years, for the purpose of a community allotment.
4. The Town Council agrees in principle to secure an alternative site for a community allotment within the 7 year period so that it can become a permanent asset for the town.



Denotes marker post location, Number ref and Orientation of Allotment number on post

Total of 39no allotment plots

- 26no - 196m² (28m x 7m)
- Other plots sizes are as follows:
- 5no - 178m² average size (27 -24m x 7m)
- 5no - 154m² average size (22 x 7m)
- 2no - 151m² average size (28 x 5.4m)
- 1no - 115m² average size (24.5m x 4.7m)





11)

Attleborough Heritage Group

AND
ATTLEBOROUGH TOWN COUNCIL

FEBRUARY 2021

A PROPOSAL TO ATTLEBOROUGH TOWN COUNCIL
BY
ATTLEBOROUGH HERITAGE GROUP
CONCERNING THE TOWN ARCHIVE BUILDING AND
FUTURE COMBINED OPERATIONS

Preserving Yesterday's and Today's Memories for Tomorrow

Attleborough Heritage Group at the Attleborough Community & Enterprise Centre
Church Street, Attleborough, Norfolk, NR17 2AH

Tel: 01953 454697

email: info@attleboroughheritage.org.uk

www.attleboroughheritage.org.uk



Memories of Attleborough



AttHeritage

Attleborough Heritage Group
and
and Attleborough Town Council
February 2021

Proposal to Attleborough Town Council from Attleborough Heritage Group concerning the Town Archive building and future combined operations.

To safeguard the important documentary heritage of Attleborough and ensure that it is recognised and made available for all, we ask the Council to consider that The Heritage Group [AHG] is given the responsibility for the Town Archive together with a lease, at a nominal fee, to use and operate the existing centre being the portacabin at the rear of Town Hall.

Thus, relieving overburdened Council staff and reducing the direct Council costs of this facility.

Such a contract would need to secure protected tenancy and be for a reasonable period and with appropriate notice terms.

Responsibility for insurances and utilities would need to be negotiated, comprehensive and set.

In exchange for this service:

1. AHG would undertake to record, transcribe and digitally maintain all the Town Archive within the overall records of AHG.
2. Protect and preserve the current archive.
3. Present the important and historic items into the Norfolk Record Office to ensure safe maintenance while retaining copies and on-line access within the town.
4. Use our pool of trained volunteers to staff the Archive centre on a workday basis.
5. To deal with all family history, local history and resident and visitor enquiries on a planned open hours basis. Currently the Group deals with local, national and international visitors to the Attleborough area and this could be continued within the Archive Centre thus providing an

important tourism service and the links to the hospitality businesses of the town.

6. Receive and record ongoing archive material and town documents as appropriate.
7. To continue to record digitally the Town Cemetery records for public access to protect the original record maintained by the Council.
8. Consider, into the contract, other duties around the historic nature of Attleborough and particularly the changes occurring with development and expansion – An important ongoing aspect as the physical and social nature of the town changes.
9. Enhance our links with Schools and offer work experience opportunities to School, FE and HE students as done successfully previously.
10. Link to the Attleborough Town Web site for public information
11. Provide “Town History” enquiries by post, telephone or email 24/7 [this is already successfully operated by AHG but could now be a regular comprehensive operation.]

We intend to continue to provide illustrated talks, fund raising meetings and events including coffee and cakes “drop ins” two morning a week together with maintenance of the very considerable existing heritage digital, image and documentary records but elsewhere leaving the Archive portacabin for administrative and operational purposes. The important social dimension that has been a feature of AHG during the last 14 years will also continue with the e-messages, newsletters and regular sharing of local memories.

Attleborough Heritage Group

Chairman Cliff Amos

Info@attleboroughheritage.org.uk

Website – www.attleboroughheritage.org.uk

Notes relating to the background and achievements of Attleborough Heritage Group (AHG) since its inception in 2006

- AHG has maintained a register of listed buildings in the Town and is responsible for listing in 2012 of the Railway Station buildings and signal cabin.
- AHG is the nominated Station Adopter group for Attleborough, using a team of trained volunteers who maintain the gardens and platform foliage at the Railway Station
- Membership is consistently more than 140. 80% of whom are local but there are members from elsewhere in the UK and beyond. All have family and other links to the Town including descendants of USAAF personnel.
- AHG has a very active website which has proved an important link during the COVID restrictions which, together with regular e letters, has been a source of information and inspiration not only to members but also to the wider public.
- A regular quarterly newsletter is distributed to all members.
- AHG presents illustrated talks each Spring and Autumn for audiences in excess of 150 and provides speakers and talks to other local groups and organisations.
- AHG has sold more than 1100 of the various publications including the very successful series 'A Look at the History of Attleborough's Streets' – pre-COVID sales were made via the Tourist Information Office as well as directly from the Group. They are also available online.
- AHG was actively involved in the Attleborough Neighbourhood Plan Steering Group including writing the Character Assessment for inclusion in the Plan.

- In 2019 AHG led the investigation into the future of the former library site, including the publication of the history of the site and its listing as an Asset of Community Value.
- The Group has a strong working relationship with the Norfolk Record Office and was responsible for the detailed archive concerning the history of Gaymers Cider and other important local businesses.
- We have successfully promoted and delivered national Heritage Open Days in the Town including during the difficult restrictions of September 2020.
- Important oral histories are held by the Group including a collection of verbatim recollections by Attleborough inhabitants who lived in the Town through the Second World War. These records and transcriptions are also held under the Group's copyright in the Imperial War Museum.
- Underlining all our activities has been the provision of research for family histories and the tracing of family lines in connection to Attleborough.
- An important and continuing part of the work of AHG is the promotion of social cohesion among the members of the group and particularly in combating loneliness and giving the opportunity to share memories and stories.