

Attleborough & Besthorpe

Encompassing: Queens & Besthorpe, Burgh And Haverscroft

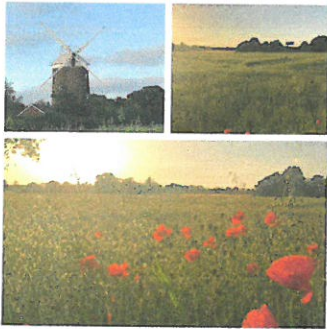
Date: July 2019



Message from Inspector Jo Walmsley

I am very pleased to be able to introduce our new Safer Neighbourhood Sergeant, Simon Jones. Simon brings with him a wealth of experience with over 17 years service, firstly as a Special before joining as a regular officer in 2004. Starting his career in Thetford, Simon has also served at King's Lynn, being involved in the pilot for the Op Moonshot team and Downham Market in the Neighbourhood Policing Team. On 25th June I and the local Beat Mangers, PC Wicks and PC London attended the Safer Neighbourhood Action Panel (SNAP) meeting where it was agreed that the previous priorities of Speeding and vehicle related anti-social behaviour (ASB) would be continued. We were able to update attendees with action taken on the priorities during the preceding months; with the Beat Managers attending 10 different locations, issuing 35 tickets for speeding and 42 verbal warnings for speeding along with a Section 59 warning issued to a driver in West Carr Rd. Finally, I am very pleased to be able to update you that a male has been arrested in connection with a spate of thefts from vehicles in the East Harling area.

What is Happening In Your Area



Your local Beat Mangers have been kept busy mixing proactive policing with engagement in the community. Following the recent thefts from vehicles in the East Harling area PC London and PC Wicks carried out reassurance patrols in and around the village and also continued to enforce the speed limits in the local area. Their engagement initiative of Coffee with a Cop is going from strength to strength, with the highest turnout yet on 24 June. The next session is booked for 22nd July at 1pm in the Tourist Information Offices in Attleborough—do come along and say hello!



Neighbourhood Priorities

Attleborough SNAP

Next Meeting : **Tuesday 1st October 2019 at 11am Attleborough Town Hall**

Current Priorities:

- * Speeding & Vehicle related ASB across the Attleborough area

Beat Managers



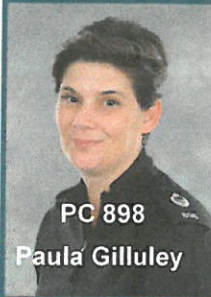
Your Beat Managers are here to engage with the local communities & work to solve local issues & priorities within your neighbourhood. The Beat Manager's aim is keep your neighbourhood as a safe place to live, work and visit.



Your local Beat Managers are **PC Damion Wicks** and **Pc Andy London**. You can contact them via 101 or email

SNTAttleborough@norfolk.pnn.police.uk

Your Engagement Officer is here to provide communications & updates regarding your neighbourhood as well as co-ordinating Community Engagements, Volunteers, Police Cadets, Special Constabulary, Neighbourhood Watch & Community Speed Watch. You can contact the Breckland Community Engagement Officer via 101 ext 2132, mobile 07766990802 or email at Paula.Gilluley@norfolk.pnn.police.uk.



Message from your Engagement Officer, Pc Paula Gilluley

Now that the warm weather seems to have finally arrived and the nights are lighter we are starting to receive reports of anti-social behaviour (ASB). ASB is any kind of activity which causes harm to an individual, community or environment. Examples can include nuisance or inconsiderate neighbours, vandalism, street drinking, inconsiderate or inappropriate use of vehicles. Norfolk Constabulary is committed to tackling and not tolerating such behaviour and we work closely with partner agencies to help people suffering from ASB. If you are experiencing problems with ASB report this on 101, 999 (in an emergency) or via our website.

Paula

Crime Update (June 2019)

Crime Statistics are provided for the preceding month. The data relates to the cluster of Parishes as detailed overleaf. Further statistical data (including offences & location detail) can be obtained from www.police.co.uk

Offence	Numbers	What This Could Entail
Arson	0	Damage caused as a result of fire.
Anti-Social Behaviour (ASB)	1	Harassment, alarm or distress is caused in a non-crime incident.
Burglary Residential	4	Residential Burglary will encompass entry to any building within the curtilage/ boundary of a residence, e.g. garden sheds and garages
Burglary Business and Community	2	Business and community Burglaries will include shops, businesses and other property. In general, the purpose for which a building is designed will determine whether it should be classified as 'Residential' or 'Business and Community'.
Criminal Damage	4	A person destroys or damages property belonging to someone else.
Domestic	6	Domestic incidents where a crime has not occurred. Parties are aged 16 or over and have been intimate partners or family members regardless of sexuality.
Hate Incident	0	Any incident where a crime has not occurred which the victim, or anyone else, thinks is based on someone's prejudice towards them because of their race, religion, sexual orientation, disability or because they are transgender.
Race or Religious aggravated public fear	0	Any crime determined to have a hate element as per above.
Possession of controlled substance	4	Unlawful possession of a drug classified in class A, B or C.
Possession of weapons	0	Unlawful possession of an article used as a weapon.
Public fear, alarm or distress	5	Public order offences e.g. from a verbal altercation to offences just short of violence.
Robbery	0	Includes a range of offences where force is used, threatened or the victim is put in fear.
Theft from a motor vehicle	1	Any item stolen that was in, on or attached to a motor vehicle.
Theft or unauthorised taking of a motor vehicle	1	Any motor vehicle including those abandoned.
Theft of pedal cycle	0	From a public place, if stolen from a shed or garage this would be a BOTD.
Theft from a person	0	Purse being taken from a handbag, or a mobile phone from a shopping basket.



Point of Contact

Follow us on social media



www.crimestoppers.co.uk

www.norfolk.police.co.uk

SNtattleborough@norfolk.pnn.police.uk

Partner Contacts



Environmental Health

111 NHS

County Council

District Council