

ATTLEBOROUGH MATTERS

Issue 8



Attleborough
my kind of town



*The time has come
for the community
to approve of the
final plan*



Come and view the
plan at the town hall
on the 13th and 14th
August, more details
on pages 4 and 5

EMPLOYMENT • EDUCATION
TRANSPORT • HEALTH AND SOCIAL
SPORTS AND LEISURE • DEVELOPERS

www.attleboroughnp.org.uk

Supporting your local neighbourhood plan

THIRSTY LAWN?

Your lawn needs water to grow and stay healthy.

Read our tips on how to keep your lawn green this summer.

It's that time of year again when the weather starts playing havoc with our nice green lawns. But why do our lawns dry off, even when everything else stays green (including the weeds)?

GIVE YOUR LAWN A DRINK!

Watering your lawn is the only way to compensate for low rainfall and maintain a healthy lawn. Using a sprinkler is the most effective way to water a large area of lawn. The amount of watering required will differ from lawn to lawn and depends on the lawn's soil content. Sandy soils allow the water to penetrate quite quickly, but may also cause the water to drain away. Clay soils make it more difficult for water to penetrate.

The best way to check if your soil is wet enough is to dig a small hole, around one to two inches deep. This is the area within which the roots of the grass plants grow in abundance and is therefore the area we want to keep wet. Some soils may only require 20 minutes of watering but some soils may require a lot longer. The best method is to allow the sprinkler to water an area for 20 minutes, then move it to another area, allowing the first application of water to saturate the soil. Once you have watered the second area, move it back to the first area and water it again for 20 minutes. This method will help the water saturate deeper in to the soil.

WHAT ELSE CAN GO WRONG?

During times of low rainfall, soils (especially clay based) will start to compact. These areas of compaction can remain compacted, even after the soil becomes saturated again. These areas are called localised compaction. There are various treatments available to help alleviate compaction such as aeration and top-dressing. Localised compaction can also be cured during the spring/summer and your local Tom Thumb Lawn Care lawn expert can help advise you on the best course of action.

For more information on Tom Thumb's lawn treatment plan, call 01842 250 026, email info@tomthumblawn-care.co.uk, or visit www.tomthumblawn-care.co.uk



**TOM THUMB
Lawn Care**
YOUR LAWN'S BEST FRIEND

From just £6 a month!

Fertilising
Weed Control
Moss Control
Scarification
Hollow-tine Aeration
Overseeding
Top Dressing
Lawn Renovation

Your lawn is the carpet of your garden. Keeping it clean and tidy really makes a big difference. Find out how Tom Thumb's seasonal treatment plan can keep your lawn looking lush, green, weed and moss free for less than Doing It Yourself!

TELEPHONE: 01842 250 026 Ref: TH4

WWW.TOMTHUMB-LAWN-CARE.CO.UK

*First Treatment
for only

£10

**up to 120sqm

*Terms and Conditions
Apply - See website

WELCOME

These are exciting times for Attleborough!

Whether you like it or not we are witnessing an expansion of our town, which has not been seen since the early 1900s. Developments are already taking place and more are planned. We could well see the town double in size over the next decade or so.

This leads us to face challenges on an enormous scale. When talking to residents there are many concerns and comments such as "What about the Doctors Surgery, there aren't enough places now", "The town is gridlocked already", "There aren't enough school places", "Where are the kids going to play?" All these comments and questions need answers.

The Neighbourhood Plan hopes to address some of these issues. It's a fantastic opportunity to shape the town by influencing planning policy, within certain parameters of course, and deliver some much needed infrastructure.

Its history started seven years ago when a group of like-minded residents set up ACT (Attleborough Community Team) to work on the now shelved ASHAAP (Attleborough & Snettlington Heath Area Action Plan). Since then it has morphed into the Attleborough Neighbourhood Plan Steering Group to oversee the plan through its development to the referendum stage. If the plan is welcomed and adopted by the residents of the town it will form part of the planning policy for the designated area.

The scope of work that has gone into the document to date is huge and thanks must go to various individuals for the countless hours, emails and meetings attended. The plan would not exist without this input. Thanks must also go to Attleborough Town Council for supporting the plan through the democratic process. I hope that these hours of input will be appreciated in the years to come.

Please take time to look at the map related to the plan in this edition of Attleborough Matters. The map appears on pages 14 and 15, ensure you remove the pull out questionnaire from pages 15-18 to view it in full. The full plan can be viewed online at www.attleboroughnp.org.uk, or you can see printed copies in the Town Hall, Tourist Info Centre, Library or the Heritage Centre. Do try and come along to the consultation weekend in the Town Hall on the 13th and 14th August where you can view the plan and speak to some other ANP steering group members. We really do need your approval and as a matter of urgency.



Tony Perkins Chairman of the Attleborough Neighbourhood Plan Steering Group
2014 Mayor Attleborough 2015/2016

Tony Perkins
ANP Steering Group and Town Councillor

ATTLEBOROUGH MATTERS IS DISTRIBUTED TO OVER 6,300
HOMES & BUSINESSES IN ATTLEBOROUGH.

If you would like to speak to someone from the team about getting
involved please contact us:

Editorial - daye@thelivelycrew.co.uk Advertising - robert@thelivelycrew.co.uk
01603 702374 01603 702374

Distributed by Eastern Leaflets. Printed by Postprint.



Attleborough

my kind of town



Working with the community, businesses and organisations to ensure the town continues to grow and prosper.

The Attleborough Neighbourhood Plan
is now in circulation and available to view at
www.attleboroughtc.org.uk or at the following venues:

• The Town Hall • The Library • The Heritage Centre

• The Tourist Information Centre

From Thursday 7th July to

Wednesday 17th August 2016

It is essential we receive feedback on this document from the public.
Feedback forms are available from the above venues or to download
from the town council website.

There will also be a public drop-in event at the town hall on
Saturday 13th August – 9am – 12pm
Sunday 14th August – 11am – 3pm
where you will be able to meet members of the ANP Steering Group

Input from local businesses, organisations and residents
is essential to ensure the plan moves forward
and is implemented.

For more details and regular updates: www.attleboroughtc.org.uk

Tel: 01953 456194

YOUR TOWN NEEDS YOU...

Like never before in recent times, we have a real chance to influence the kind of town Attleborough will become over the next 20 years.

Whether you work, rest or play in Attleborough and the surrounding villages you will be affected by one or more of the following areas and due to the 5,500 houses landing in the town.

The Roads – Congestion on Attleborough roads is bad now. Car Parks struggle to accommodate current demand and the road system through town is not designed for HGV's and the amount of traffic already using it. What happens when thousands of extra cars drive with the new families moving in?

The Schools – What happens if the housing stock attracts thousands of families wanting the best for their child's education. The current schools are just not big enough.

The Health Services – Attleborough currently has 17,000 people on the doctors' books. Its coping but for how much longer? It is estimated the population will double over the next 20 years.

Sport and Leisure facilities – needs refreshing regardless of the growth of the population. Who wants to move to a town with the current limited offerings?

An attractive place to live – The houses will be coming regardless. Wouldn't it be good to have some influence over type and design and the effect they might have on the environment?

Jobs – We need to attract businesses to the town, the right businesses. Without jobs here new residents will travel elsewhere for work and the town will just become a massive sprawl of housing developments. A commuter town.

The High Street – Attleborough is lucky to have one of the most attractive high streets with a choice of independent shops. Any development planned needs to support and prevent the demise of this central hub, whilst attracting more independent businesses.

What would you like the town to be like?

As a resident or worker in the town or surrounding villages we urge you to make sure you attend one of the consultation weekend dates at the Town Hall. This is your best chance to see and comment on the proposed plan. A full copy of the plan is also available to view (beforehand online at www.attleboroughtc.org.uk or at any of the following - Town Hall, Heritage Centre (opposite the station), Doctors Surgery, Library and Tourist Information Centre. This copy of Attleborough Matters has a feedback form in the centre for your use. Return completed to the Town Council offices or bring it along to the consultation weekend on the 13th and 14th August.

Please turn overleaf for a reminder of the ANP objectives

The Core Objectives (CO)

The Core Objectives, which have evolved from the consultations, are:

CO 1

To view the town as one development area, with strong links and connections to its hinterland and beyond.

CO 2

To preserve and enhance the historic centre of the town and its history.

CO 3

To identify new employment land which can be developed and to encourage new SMEs to the town in order to provide a wide range of employment opportunities.

CO 4

To promote the integration of businesses and Attleborough Academy Norfolk as partners in reducing the local employability skills gap.

CO 5

To integrate the new housing to facilities in the town with the necessary footpath and cycle ways, and to address the outstanding traffic congestion in the town centre.

CO 6

To provide housing which meets the needs of all, with a range of housing including affordable, 'older living' developments and housing types which will encourage entrepreneurs and professional people to live in the community.

CO 7

To provide excellent health and community facilities within the town, including a single integrated health and social care facility.

CO 8

To provide excellent new and improved sport and leisure facilities for the community, working with Attleborough Academy Norfolk as well as sport and community clubs and organisations.

CO 9

To promote all new buildings to incorporate the highest standards of design, new build methodology, materials and energy saving techniques.

CO 10

To protect and enhance the natural environment, including additional high quality open space.

CO 11

To promote and enhance the town to attract investors, developers and visitors by building on its heritage.

The above objectives have been matched, as appropriate, to the seven themed areas of focus.

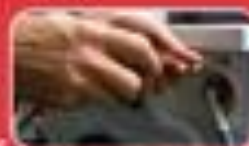
Simon Long

Domestic Appliance Care

"With our experience you can have peace of mind at very affordable prices"

We specialise in repairing leading makes and models of domestic appliances;

- Washing machines
- Tumble dryers
- Dishwashers
- Dyson vacuum cleaners
- Electric cookers / ovens
- We also repair USA style appliances



We offer a workshop repair service. Find us at: 38 Howlett Way, Thetford, IP24 1HZ

T: 01842 760822

E: info@whitegoodsrepairs.co.uk
www.domesticappliancecare.co.uk



THE CROWN

SERVING FRESHLY PREPARED
FOOD, MADE USING LOCALLY
SOURCED INGREDIENTS

MON-SAT 12-2.30PM 6-9PM
SUNDAY 12-7PM

- REAL ALES • LOG FIRES
- HOME COOKED FOOD
- DAILY SPECIALS
- THEMED SUPPER CLUB NIGHTS
- THURSDAY NIGHT STEAK NIGHT
- SUNDAY ROASTS • DOGS WELCOME

BOOKING
ADVISEABLE:
01379 676184

THE
COUNTRY FEAST
SERVED MONDAY TO
SATURDAY 12 - 2.30PM
2 COURSES FOR £12.95
3 COURSES FOR £15

10% OFF FOOD IN THE
COUNTRY FEAST MENU
WHEN YOU ORDER THE MENU

THE CROWN INN, THE GREEN,
PULHAM MARKET, IP21 4TA | 01379 676184
THRO@THECROWNINN.PULHAM.CO.UK | WWW.THECROWNINN.PULHAM.CO.UK

Heading For Gridlock!... not if we get the transport system right to accommodate the significant increase in traffic coming to the town.

The transport system has been a popular topic at the many consultation events that have been held for the ANP.

The road structure in the town is already seriously over worked and at busy times during the day comes to a halt. Norfolk County Council, Highways, recently commissioned a survey to measure the traffic flow. With a view to recommending short term fixes.

The Mayor Jeremy Burton called an extraordinary meeting of the town council, which was open to the public, to discuss the survey results along with a Breckland Council's "Greater Attleborough Partnership". It would appear the survey was conducted on an early week, late afternoon and wet day. This brought questions forward as to whether the survey result gave a true picture of the problems the roads cause.

Proposals from Highways included, cycle only lanes and traffic lights which experts and others in the room suggested was a quick fix and would not solve short term as well as longer term problems. Norfolk County Council has allocated £4.2m to road improvements in the town and with a deadline to spend by 2021 it makes adoption of the ANP more of a priority to secure the funding and ensure town centre traffic is directed in the right way.

"Attleborough already suffers from serious congestion at busy times as well as lack of car parking in the town centre" said Ed Tyrer, lead on ANP transport, Town Councillor and Governor at the Academy in town. "It is crucial the roads are placed high on the agenda of any major funding coming into the town and those responsible do not provide quick fix and short term solutions and assume the town will continue to function"

"It is essential that we work collaboratively with Norfolk County Council, Breckland Council, and the developers, to ensure that we have an integrated transport plan not just to address the immediate issues and proposed development but also for the longer term. Any short term solutions must be able to be show how they contribute to the longer term vision and requirements of the town.

Attleborough is well placed to become a leading example of how people can move within and around towns and we must not focus solely on the highway issues. We must look at not only the constrained highway network, but the role and timing of the proposed link road, how we can manage and facilitate additional parking in the town centre and how we can encourage more trips to be made by more sustainable transport and new technologies, providing the infrastructure to encourage more walking and cycling to make Attleborough an attractive and vibrant town".



ANP Transport & Communications

The historic nature of the town's road network does constrain the options available to seek to reduce the amount of traffic which passes through the town centre. The ANP is working with Norfolk County Council to seek to identify options which can improve the movement through the town centre whilst at the same time provide for the planned growth.

The key development which the ANP seeks to achieve is to develop an integrated transport strategy and implementation plan. This is design to look at the town as a whole, not just the highway and traffic requirements, but also the provision for better bus use, community transport, walking and cycling. Critically it will also look at the role and impact of the proposed 'link road' connecting into the new development area from London Road to the south.

Obviously the biggest impact is on the existing gyratory within the town. Options are being looked at with Norfolk County Council, at whether part of this could become two-way, along Surrogate Street and Cornsought Road. However, these would need to be looked at in context with the wider strategy and plan to assess its benefits and impacts.

As part of this, we also seek to develop a car parking strategy and implementation plan. Car Parking in the town centre, and the adjoining residential developments are constantly identified as key concerns, not only affecting local businesses but also attracting people to visit and shop in the town.

The ANP is also looking to develop a new integrated transport hub at the rail station. As the town grows, the rail station will become a central node in the towns transport network. We will seek to work with Network Rail, the rail operators, the bus companies, Norfolk County Council and other stakeholders to look at how a fully integrated hub can be developed and operated.

A major area we wish to promote is the installation of super fast broadband in all new housing developments, and also improve the existing telecommunication networks and mobile networks.

Issues surrounding transport in Attleborough are complex and as stated there are no easy answers. We feel the ANP can begin to finally look what opportunities there are to try and improve the movement of people and goods within and around the town over the short and medium term, but also look at how travel behaviour can change over the next 10-20 years in response to generational shift, change in technologies, and social changes to make Attleborough an attractive place to live and move around, but also essentially to attract economic investment by providing effective, efficient and more sustainable transport infrastructure.

Contribution by Ed Tyrer lead on transport for the ANP.

Ed is a chartered town planner and transport planner with over 26 years' experience working in local authorities, private practice, Central Government, European Union and international projects. Ed is a resident in the town along with his wife and two daughters.



Your feedback is so important to us.

One of the pleasures of working on the Attleborough Neighbourhood Plan (ANP) and during the periods of public engagement, has been about gathering the opinions of the local community. During the past few years thousands of members of the public, business owners and others have been asked for their input



and opinions. It is not just about consulting "experts in their chosen field", it is of the utmost importance that those who work, live and play in the town and surrounding areas have their say before taking the plan forward to examination and ultimately adoption. It is what a neighbourhood plan is all about.

Whether aged 6 or 60, employed, retired or a business owner, a mum or a grandmother, absolutely everybody's opinion counts and will continue to do so over the crucial public consultation period which we are in now and finishes on the 17th August 2016.



Many of the ANP steering group members have gained new skills in the process having opportunities to be involved in research, planning meetings and writing parts of the plan. Others have taken on the challenge of media interviews including radio and press whilst some have become a dab hand at social media.

The support for the plan has been tremendous and very well received. We hope through the introduction of the Attleborough Matters magazine which is posted through 6,500 letterboxes and 8 times over the past months, that we have reached out to everyone and there should be nobody connected to the town who is not aware of the ANP. Supported by ongoing social media, events and other activity, residents and businesses are well and truly connected with Attleborough's challenges over the next 20 years.

We really are getting close to the finish line. The consultation weekend on the 13th and 14th August at the Town Hall is our final engagement opportunity with the public and also your last opportunity to see the plan in full before it progresses to the scrutiny stage with Breckland Council.

Please drop by for tea/coffee and biscuits and view the plan in its entirety. Members of the ANP Steering Group will be on hand to answer questions.

I hope to see you there.

Valerie Watson-Brown, ANP Comms Team



Join the Olympic Trail!

The Attleborough Fun Fest Team are recreating the fun from last summer by putting on an Olympic Trail. For those of you who remember, we did a bike trail which was a huge success with over 150 people getting involved. This was so successful that we had people coming from other towns to take part in the trail and everyone said how great it was. We even made it onto Mustard TV twice.

To coincide with the Rio Olympics, we have asked businesses in the town to decorate their windows with an Olympic sport and they have jumped through hoops to put in a spectacular display.

How can you get involved?

To take part in the trail, you can pick up a map at A W Myhill & Son on Exchange Street, Attleborough and throughout the Summer Holidays try and find as many Olympic sports displayed in business premises around the town. You will be able to vote for your favourite display, and a prize will be given to the business with the most votes! The trail maps that get handed in will then be checked and the person who has found the most will also get a prize.

All money raised will be going to two charities, **Attleborough Scouts and Star Throwers in Wymondham.**

Come along to an Olympic Fun Day at the Connaught Hall, Attleborough on Monday 29th August, 11am-3pm.

Full details will be announced nearer the time, please make sure you have the date in your diary

The team are working really hard to keep the momentum of last year's fun activities moving and appreciate everyone taking part and finding the time to do the displays. Without the support of the town and residents of Attleborough we wouldn't be able to put on the trails and other events.

We look forward to seeing you out and about in Attleborough over the coming weeks.

Anna, Fun Fest Organiser,
A W Myhill & Son Ltd.



mcp

SOLICITORS

Notary Public & Referee LLP

100 High Street, Norwich

NR1 1AA

Telephone: 01603 714200

- Home Visits Available
- Convenient town centre location
- Fixed fees available



Company & Commercial
Wills Probate & Trusts
Personal Injury
Negligence
Crime

Dispute Resolution
Care for Elderly
Employment
Family

www.mcp-law.co.uk

Applewood Hall Weddings

A harmonious combination of rustic charm and contemporary style, Applewood Hall offers an undeniably unique wedding venue for your special day in the heart of Norfolk.



www.applewoodhall.co.uk
01953 715339 info@applewoodhall.co.uk

Applewood Hall, Farmington Road, Norwich, Norfolk NR1 2JL



INSPIRED
FLOWER DESIGN

FREE DELIVERY
to all NR17 Postcodes

Local Independent Florist

Making fresh floral deliveries to
Attleborough and surrounding areas

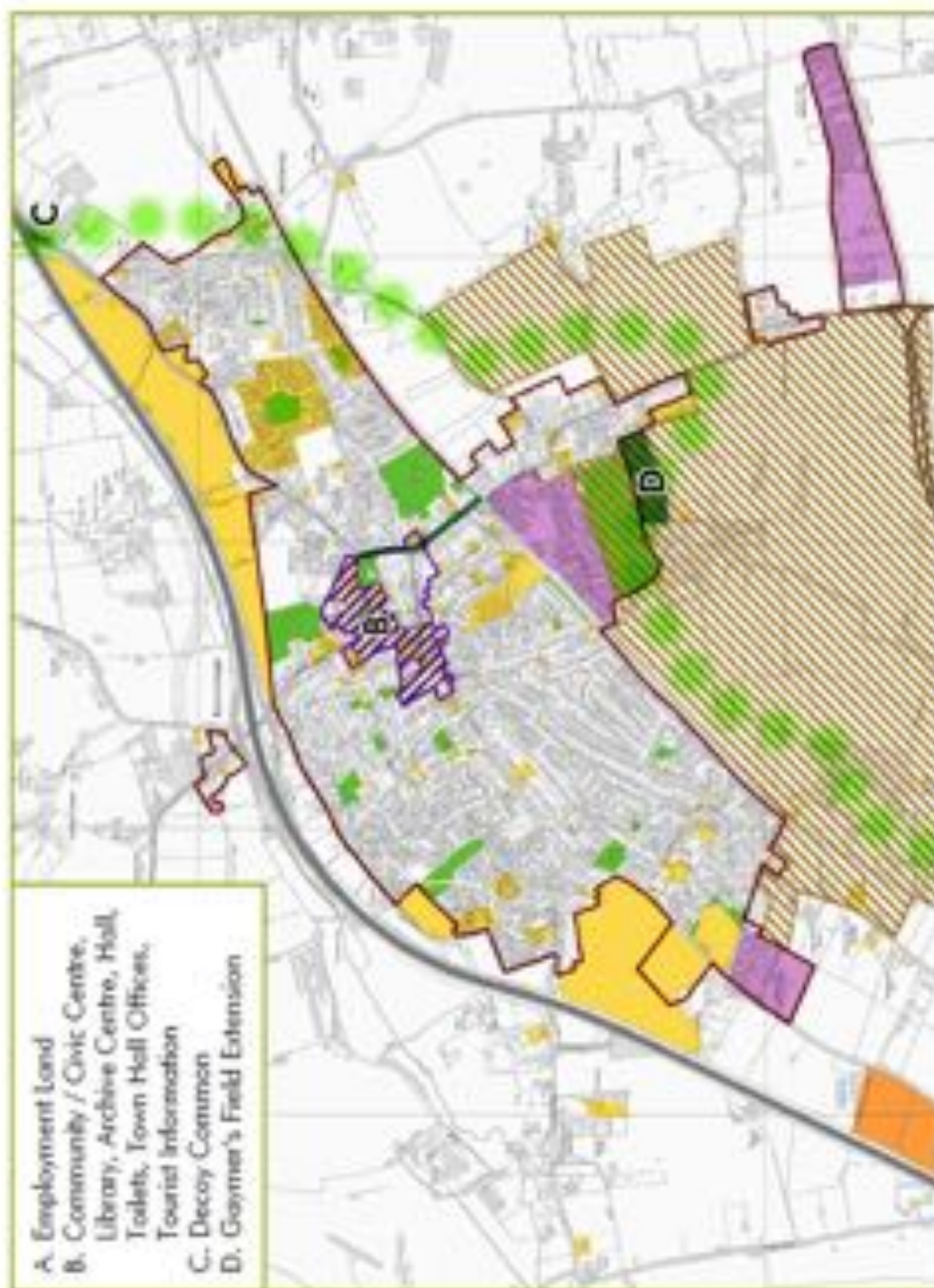


Call 01953 453 533 / 07957 090 508

hello@inspiredflowerdesign.co.uk

SHOP ONLINE www.inspiredflowerdesign.co.uk

Weddings | Funerals | Corporate Events | Country Homes | Special Occasions | Bouquets



Attleborough

Historic Market Town in the Heart of Norfolk



Attleborough Neighbourhood Plan

Feedback sheet

A lot of effort over the past couple of years has gone into preparing the detailed plan you see before you. We believe the proposals reflect the needs of Attleborough and are achievable. We have worked with various groups in the town to produce the ANP and we believe that it reflects the needs of Attleborough in a realistic and achievable way.

This is your final opportunity to have your say before the document goes forward to Breckland Council and then on for independent examination.

Complete this questionnaire and return it to the Town Hall before the 17th August, or bring it along to the consultation weekend on the 13th and 14th August

The following key themes shape the future of Ardsborough through the neighbourhood plan. Please take time to review the detail in the plan, provide any comments and circle your approval beside each subject matter. If you suggest changes please say what to change and why – **what evidence do you have?**

Please place the policy number you are commenting on next to the comment.
Continue on a separate blank sheet if needed.

Theme 1: The Local Economy Policies LE.P1|LE.P2|LE.P3|LE.P4|LE.P5|LE.P6

strongly agree agree neither agree nor disagree disagree strongly disagree (tick in appropriate)
Comments – please include policy number for reference

Theme 2: Housing Policies H.P1|H.P2|H.P3|H.P4

strongly agree agree neither agree nor disagree disagree strongly disagree (tick in appropriate)
Comments – please include policy number for reference

Theme 3: Transport and Communication Policies TC.P1|TC.P2|TC.P3

strongly agree agree neither agree nor disagree disagree strongly disagree (tick in appropriate)
Comments – please include policy number for reference

Theme 4: Education Policies ED.P1

strongly agree agree neither agree nor disagree disagree strongly disagree (tick in appropriate)
Comments – please include policy number for reference

Theme 5: Health and Social Care Policies HS.P1|HS.P2

strongly agree agree neither agree nor disagree disagree strongly disagree (tick in appropriate)
Comments – please include policy number for reference

Theme 6: Sport, Leisure, Community Facilities Policies SLC.P1|SLC.P2|SLC.P3|SLC.P4|SLC.P5|SLC.P6|SLC.P7|SLC.P8

strongly agree agree neither agree nor disagree disagree strongly disagree (tick in appropriate)
Comments – please include policy number for reference

Theme 7: Environment, Sustainability, and Design Policies ESD.P1|ESD.P2|ESD.P3|ESD.P4|ESD.P5|ESD.P6

strongly agree agree neither agree nor disagree disagree strongly disagree (tick in appropriate)
Comments – please include policy number for reference

Detail General Comments

strongly agree agree neither agree nor disagree disagree strongly disagree (tick in appropriate)
Comments – please include policy number for reference

I believe this plan works for the future development of Ardsborough

strongly agree agree neither agree nor disagree disagree strongly disagree (tick in appropriate)
Comments – please include policy number for reference

As part of the ANP audit we are required to collect evidence of engagement with the local community. Your help by completing the following would be much appreciated (please do so even if you have no comments on the above).

Name _____

Business name (if applicable): _____

Town _____ Postcode _____

Tick the following as appropriate -

Age group (Circle) 0-12 13-20 21-35 36-49 50-65 Over 65

Male/Female Resident of Attleborough - Y/N

If you would like to directly be informed of the ANP as it moves forward to examination, please provide your

Email address _____

(This will not be used for any other purpose)

Thank you for your views. Together we can make Attleborough a great place to work, rest and play. Updates on the plan can be found at

www.attleboroughnp.org.uk



Attleborough Neighbourhood Plan

Proposals Map
June 2016



Contains Ordnance Survey data. © Crown copyright and database right. Attleborough Town Council 0100054473



FIRST CHOICE
HOME CARE

We can provide support in your own home enabling you to retain your independence.

First Choice Home Care is an established business that has been providing quality domiciliary care and supporting people in their homes for the past 3 years. Our office is based in the market town of Wymondham, we're delighted to announce that we are now providing care in the Thetford area. Our new opening times are; Monday - Friday 8am-6pm and Saturday 8am-4pm. First Choice Home Care offers;

- Peace of mind for you and your family
- Caring local staff
- CQC and Local Authority registered
- Attention to detail
- Care workers are fully trained and hold a fully enhanced DBS

We deliver flexible, person centred care including;

- Personal care and medication support
- Shopping and housework
- Hospital discharge and high dependency care
- Meal preparation
- Attending social events and appointments

For a confidential, FREE no obligation discussion please contact us on 01953 667950.

We are recruiting;

Wymondham, Hethersett, Attleborough, The Ellingham, Rocklands, The Buckenham, Mingham, Thetford, Watton and ALL surrounding areas.

Various positions available - Full time, Part time, Evenings & Weekends.

*Weekend working is either every weekend (if desired) or alternate weekends on a rota.

Are you:

A car driver/owner, friendly, approachable, with excellent communication skills, reliable, adaptable with a good sense of humour and motivation?

In return we can offer:

Competitive pay rates, holiday pay, uniform, full training, mileage allowance, qualifications (including diplomas in health and Social Care), Support with excellent career progression).

We are looking for enthusiastic individuals to join our company.

If you're interested in finding out more contact us on:
Tel 01953 667950 or Email: dan@firstchoicehomecare.co.uk



www.firstchoicehomecare.co.uk



Fun and Friendly

Beginners to Advanced

Expert Professional Tuition

Learn to Play Bridge!

With THE NORWICH BRIDGE SCHOOL

Beginners' Classes Weekly from 12th September

♥ White Horse Inn, Trowse	Mon	7pm - 9:15pm
♦ Coslessey Centre	Wed	10am - 12:15pm
♠ Hemphall Mill Centre	Fri	10am - 12:15pm



Contact Suzanne: 07825705526 | www.norwichbridgeschool.co.uk

Expert Dog Care and Training at:

Thornwood Kennels

Home from home for your best friends



Dog Boarding - Expert Behavioural Advice
Specialist Rehabilitation - Dog Grooming

ThornwoodKennels.co.uk

Want to know more? Ring Paul for a chat on

01953 718 381 or 07913 792 353

ThornwoodKennels.co.uk

10%
OFF!

shutters

free { home visits
quotation
measuring
fitting

norwich | call us now!
sunblinds | 01953 544015

www.norwichsunblinds.co.uk

Applew33d Hall Enchanted Christmas Party Night

Saturday 10th December
7pm - 11pm

A Evening of Music, Singing, Games, Prizes
and more... Tickets £5 and Free Local Transport



To find out more and our Christmas Party Program
on 01953 716339 or visit www.applew33d.co.uk

Battle of the Somme

The 100 year anniversary of the Battle of the Somme was remembered recently by a memorial service in Attleborough led by the Chairman of the Royal British Legion Mr Dave Bickel and Reverend Matthew Jackson. It was commemorated with three wreathes laid on the War Memorial by the President of the Royal British Legion, Mr Rod Eldridge, Attleborough Town Mayor, Cllr Jeremy Burton, and finally by Mr Tim Cobb, representing Attleborough Businesses.



Long serving member of Attleborough's Tourist Information Centre, Dorothy Wright, retires after many years of faithful service.

Mayor Jeremy Burton attended to present Dorothy with a gift and thanks from Attleborough Town Council and further thanks were expressed from her other volunteers and Town Council staff.

Dorothy and her husband moved to Attleborough from Kent in April 1999. As well as volunteering in the Tourist Information Centre, Dorothy has also worked with the Heritage Society, the Brownies and the Rainbows. She is a long term member of the Great Ellingham Singers. Her daughter, Sarah and her family moved to Attleborough when Dorothy's husband John became unwell in 2003. Dorothy has volunteered at the Tourist Information Centre (TIC) since it opened on the 9 September 2005. It has always been based in the Attleborough Town Hall. Along with a group of other volunteers, Attleborough residents and visitors are kept up to date with information, from bus timetables to day trips, to where to visit in Norfolk and further afield. Dorothy was one of the first people to suggest that the Community Car Service bookings were handled by the Tourist Information Centre office to support the drivers and this continues to be the case. Dorothy is also a long term supporter of Norwich City Football Club and supports all home games when she can.



The
Tourist Information
is based at the
Town Hall and open
Mon-Wed 10am-2pm,
Thurs 10am-3pm and
Fri 10am-12 noon.

Dorothy retired from her Voluntary work because of some health issues and will be much missed as she has a wealth of local knowledge.



Breckland Lodge

We warmly welcome you to the Breckland Lodge Hotel in Norfolk, offering newly refurbished, stylish and affordable rooms.

Home of the popular Stag, bar restaurant and carvery, come and visit our new coffee lounge or Bistro.

Breckland Lodge is the ideal venue to catch up with friends and family (children welcome) for breakfast, lunch or dinner or stay in one of our stylish bedrooms.






01953 455202 www.brecklandlodge.co.uk

How's your hearing?

Take the first step towards better hearing and book a hearing test with The Hearing Care Centre!

Find us locally at:

Attleborough

Cecil Arney Opticians, Church Street

- Hearing tests
- Latest digital hearing aids
- Outstanding aftercare
- Carver repairs
- Custom made ear protection
- Home visits

To book your appointment call

Freephone 0800 096 2637

• Based Billing • Family Run • Private • Independent • Local



HEARING CARE CENTRE
HEARING CARE CENTRE
HEARING CARE CENTRE

plandescil

consulting engineers
cost effective engineering solutions

Plandescil Ltd
Convergent Road
Attleborough
Norfolk NR17 2BN

t: 01953 452001
e: info@plandescil.co.uk
plandescil.co.uk

pcd

civil / structural / environmental / surveying



New Boundaries Group

Support Workers Required (Days or Nights). Full and part-time hours available

We are recruiting for highly motivated, creative and friendly people to join our professional team.

Full and part time vacancies available in Northwold, Taverham, Hellesdon & Fecthorpe.

Applicants must have a genuine desire to help and support people with learning disabilities and complex needs, to lead a happy and fulfilling life. Previous experience is desirable but not essential as you will be paid to attend any training required. Minimum age 18.

Working some weekends and bank holidays will be necessary due to the nature of this role.

Hourly day rate from £7.25 (£7.00 for under 21s). Hourly night rate from £7.50.
Driving licence is desirable.

Successful applicants will be required to complete an enhanced DBS check.

To request an application pack please call 01692 407549 or email: recruitment@newboundariesgroup.co.uk

Alternatively, please complete the online application form and equal opportunities monitoring form at: www.newboundariesgroup.co.uk

Attleborough Day Centre, where older people maintain independence, enjoy a freshly prepared meal, get help with banking, shopping, appointments etc.

A break from home, a chance to meet new friends and respite for carers. Activities include: Arts and crafts, exercise opportunities, quizzes and games, folk and slide shows, live entertainment and much more.....

Tail Lift mini-bus transport with escort available.



OPEN Monday, Tuesday and Wednesday, we cater for individuals with complex needs including domestic, mobility issues and neurological conditions.

ALSO Mini-bus shopping service, Luncheon club, Befriending, Sitting service and Domestic care.

To book your FREE TRIAL SESSION call us on 01953 454633
St. Mary's Community Hall, Church Street, Attleborough, NR17 2AH

For more information please visit our website: www.attleboroughdaycentre.co.uk



Fresh Pod extends the life of fresh fruit, vegetables and flowers for up to 4 times longer

100% safe and natural, Fresh Pod works by removing Ethylene in the air which fruit and vegetables give off naturally as they ripen

• Removes mould, rot, fungus and bacteria from fridges and stores

• Used in the smallest of refrigerators to the largest commercial showrooms from growers to consumers, Fresh Pod protects fresh produce and prevents premature ripening

• Prevents odour waste, save you money whilst contributing to a greener planet, a Fresh Pod kit will protect your fruit and vegetables for a year and costs just £12.99!



www.freshpod.co.uk info@freshpod.co.uk 01603 702374

Fresh Pod Ltd, 34a Yarmouth Road, Norwich, Norfolk, NR7 0EF



Tony Perkins Butchers
Church Street, Attleborough NR17 2AH

Summer 2016

If you're planning a BBQ come and talk to the experts.

We can supply quality locally sourced ingredients to make your "BARBIE" go with a bang.



Whether it's a "quickie" or a planned event to celebrate an occasion we can cater for your needs safe in the knowledge that quality will be guaranteed.

Give us a call on 01953 453423 or pop into the shop to speak to us about your requirements.

tony@tonyperkins.co.uk | www.tonyperkins.co.uk



Financial Advice... In The Comfort Of Your Own Home



- Mortgages, Re-Mortgages
- Life Insurance • Critical Illness
- House & Contents

- Introductions for • Savings
- Investments • Pensions
- Wills • Funeral Plans

Dick Harvey / Maggie Hobbs

01953 452552

Bush House, Queens Square,
Attleborough, NR17 2AF

Kenneth Lake

01379 677525

Hamptons, Sneath Road,
Aslacton, NR15 2DS

www.personalface2face.co.uk

YOUR HOME MAY BE REPOSSESSED IF YOU DO NOT KEEP UP REPAYMENTS ON YOUR MORTGAGE.

SOL4406

A Cracking Carnival

On Saturday the 9th and Sunday the 10th of July Attleborough's largest annual event went with an absolute bang!

On the Saturday the much loved Party on the Park event was held on the Recreation Ground with approximately 3000 people in attendance. The crowds were treated to live music from a plethora of local acts as well as two main tribute bands. The musical extravaganza was kicked off by the fantastic beatboxer and guitarist Josh Hyland who then stuck around for the evening to compere the show and entertain the crowds between the various acts.

Next up was the mind-blowingly talented Jack Goodacre and his band, the crowd were simply amazed by his guitar playing, singing and confidence with most struggling to believe he is only 10 years of age!

Local indie/rock cover band Against All Odds entertained the crowd with their mixture of 80's classics and modern pop songs and three singer songwriters going by the names Kolin Duriel, Danny James and James Summerhill also entertained the crowd throughout the evening.

All of this led up to the fantastic Little Mix Tribute - Mini Max and One Direction Tribute - Only One Direction both had everyone up and dancing. People of all ages were up on their feet as both the boys and girls sung hits from their idols catalogue of songs.



Of course there was plenty of food on offer with large queues at both Tony Perkins BBQ stand and the Debbie's Dinky Donuts trailer. A licensed bar helped refresh a few in the audience who had their dancing shoes on and as always L. Gray and Sons funfair drew a large crowd with their fantastic rides and attractions.



Alfie Piggini was crowned Carnival Prince with Chiana Woodrow as the Carnival Princess.

The carnival procession attracted more than 20 entries this year, confirming it is growing as the organisers had hoped it would year on year. Town Crier Alan Austin led the procession, turning heads with his voice that certainly couldn't be ignored! The parade finished back on the Recreation Ground which hosted another full day of entertainment.

The main arena showed the skill and talent of everything from high wire artists to falconry. Savage Skills Bicycle Display Team demonstrated some amazing bike control and free running skills, and The Lamb National Sheep Racing Competition

certainly got everyone's attention with them completing circuits wearing knitted jockeys and jumping over hurdles as they shot around the field.

Out On a Wing Falconry wowed the crowds with their amazing birds of prey display soaring through the sky above onlooker's heads.

Also in the air was the awe inspiring Bernie Bennets Airborne Display which even featured him on a unicycle and on a tightrope, blindfolded!

Live music continued all day on the main stage, compered by the soon to be on air Park Radio from Diss. Local bands entertained the crowds with music ranging from the 60's to the present day.



Sam Aghabi, from the carnival committee "We are delighted at the people of Attleborough's response to this year's Carnival. This is the biggest event that happens around here and it's all run by volunteers, it really is heart-warming to see so many people of different ages enjoying themselves and getting together. It really makes it worth doing!"

2017's event will be on the 8th and 9th of July. If you would like to be involved, please contact the carnival committee at info@attleboroughcarnival.co.uk or call 07729 592960.

We really hope those that attended enjoyed the event as much as we did and hopefully it will stay dry again next year!

Sam Aghabi, Carnival Organiser.



ARE YOU LOOKING FOR A RELIABLE PAINTER AND DECORATOR?

IF SO, THEN LOOK NO FURTHER...

- FREE ESTIMATES
- COMPETITIVE RATES
- PROFESSIONAL, FRIENDLY & RELIABLE SERVICE

NO JOB TOO SMALL!



Need a
locksmith?
24/7!

Kingfisher Locksmiths

- No Call Out Charge
- AOP Discount
- A Norfolk Trusted Trader!

Tel 01953 602255 Mob 07958 315661
www.kingfisherlocksmiths.co.uk

Be smart! Put our telephone number in
your phone, you never know when you
may need it...



Computer Repairs

MrWIZZ IT Support

Tel 01953 453103

Support@mrwizz.co.uk

www.mrwizz.co.uk



- Slow Computer
- Health Check
- Internet Problems
- Wireless setup
- Tutorials

Much More Just Ask
No Call Out Fee



HOME COOKED FOOD
FROM OUR KITCHEN TO YOUR DOOR

We are a 'made on wheels' type service, we
deliver fresh, hot dinners straight to your door.
We offer a large selection of homemade main and
dessert choices on a 4 weekly menu. If you or a
friend or relative isn't getting regular meals our
service is perfect as all the stress and worry of
preparing meals is done for you.

For more information visit our website
www.redhotmeals.com
Or call Chae to get an information pack
07955 823 663

DINOSAUR ADVENTURE

IT'S TIME YOU CAME-N-SAURUS!

DON'T MISS...!

Dippy's

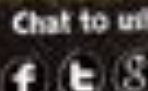
SPLASH
ZONE!



Remember to bring your swimwear and towel!

Open
25th March -
30th Sept inc.

Subject to adverse
weather conditions



#dinosauradventure

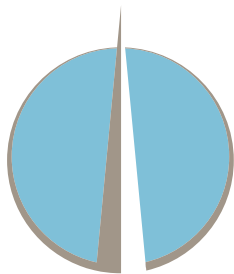


Open daily
from 9:30am

Lenwade, Norfolk NR9 5JW

Call us! 01603 876310

www.dinosauradventure.co.uk



SPIRE

SOLICITORS^{LLP}

Are you thinking of buying or selling a property?

Buying a property is probably one of the largest investments any of us will make. Whether you are buying or selling your family home, thinking about remortgaging, or investing in a property portfolio, you will naturally want to make sure that your interests are fully looked after.

How can we help?

Our residential property team offer valuable local knowledge and proven expertise and are on hand to assist with:

- Buying a property
- Selling a property
- Shared ownership
- Remortgaging or equity release
- New builds
- Buy to let
- Transfer of equity
- Declaration of trust

We offer face to face appointments, call 01953 453143 today to discuss your requirements.

We are local to you!



CARL HEYWOOD



ISOBEL RHODES



JULIE CROWDER BARR



MARGARET LAKE



REBECCA JOHNSTONE

01953 453143 ■ www.spire solicitors.co.uk

The Pines, 50 Connaught Road, Attleborough, Norfolk, NR17 2BP